

Datasheet for ABIN927540 **anti-ZBTB22 antibody (C-Term)**



[Go to Product page](#)

1 Image

Overview

Quantity:	100 µL
Target:	ZBTB22
Binding Specificity:	C-Term
Reactivity:	Human, Mouse, Dog, Rat
Host:	Rabbit
Clonality:	Polyclonal
Conjugate:	This ZBTB22 antibody is un-conjugated
Application:	Western Blotting (WB)

Product Details

Immunogen:	ZBTB22 antibody was raised in rabbit using the C terminal of ZBTB22 as the immunogen
Cross-Reactivity:	Mouse (Murine), Rat (Rattus), Dog (Canine)
Purification:	Purified

Target Details

Target:	ZBTB22
Alternative Name:	ZBTB22 (ZBTB22 Products)
Background:	ZBTB22 contains 1 BTB (POZ) domain and 3 C2H2-type zinc fingers and belongs to the krueppel C2H2-type zinc-finger protein family. ZBTB22 may be involved in transcriptional regulation. Synonyms: Polyclonal ZBTB22 antibody, Anti-ZBTB22 antibody, zinc finger and BTB domain containing 22 antibody.

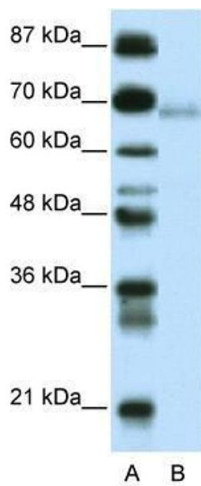
Application Details

Application Notes:	WB: 0.2-1 µg/mL Optimal conditions should be determined by the investigator.
Comment:	ZBTB22 Blocking Peptide, catalog no. 33R-6327, is also available for use as a blocking control in assays to test for specificity of this ZBTB22 antibody
Restrictions:	For Research Use only

Handling

Format:	Lyophilized
Concentration:	Lot specific
Buffer:	Lyophilized powder. Add 50 µL of distilled water. Final antibody concentration is 1 mg/mL in PBS buffer.
Handling Advice:	Avoid repeated freeze/thaw cycles.
Storage:	4 °C/-20 °C
Storage Comment:	Store at 4 °C, following reconstitution, aliquot and store at -20 °C.

Images



Western Blotting

Image 1. ZBTB22 antibody used at 0.2-1 ug/ml to detect target protein.