

Datasheet for ABIN927541
anti-ZNF266 antibody (N-Term)



[Go to Product page](#)

2 Images

Overview

Quantity:	100 µL
Target:	ZNF266
Binding Specificity:	N-Term
Reactivity:	Human
Host:	Rabbit
Clonality:	Polyclonal
Conjugate:	This ZNF266 antibody is un-conjugated
Application:	Western Blotting (WB), Immunohistochemistry (IHC)

Product Details

Immunogen:	ZNF266 antibody was raised in rabbit using the N terminal of ZNF266 as the immunogen
Purification:	Purified

Target Details

Target:	ZNF266
Alternative Name:	ZNF266 (ZNF266 Products)
Background:	Located on chromosome 19, ZNF266 is part of the Kruppel-related zinc finger gene family. Synonyms: Polyclonal ZNF266 antibody, Anti-ZNF266 antibody, zinc finger protein 266 antibody, HZF1 antibody.

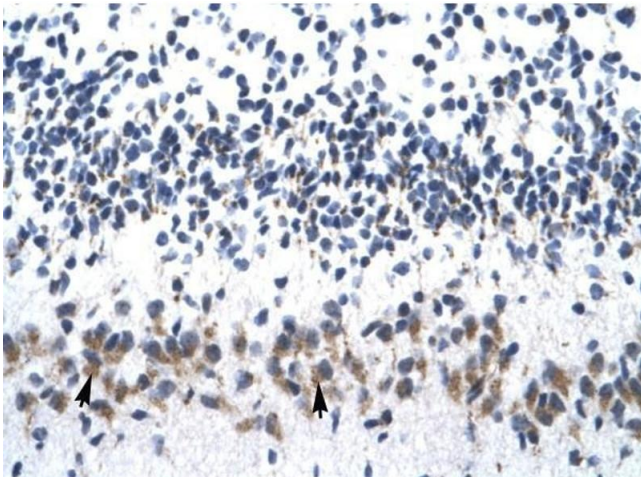
Application Details

Application Notes:	WB: 0.2-1 µg/mL Optimal conditions should be determined by the investigator.
Comment:	ZNF266 Blocking Peptide, catalog no. 33R-2391, is also available for use as a blocking control in assays to test for specificity of this ZNF266 antibody
Restrictions:	For Research Use only

Handling

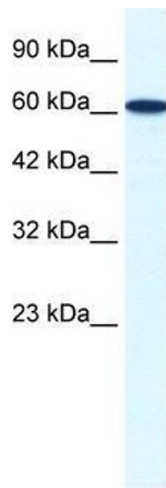
Format:	Lyophilized
Concentration:	Lot specific
Buffer:	Lyophilized powder. Add 50 µL of distilled water. Final antibody concentration is 1 mg/mL in PBS buffer.
Handling Advice:	Avoid repeated freeze/thaw cycles.
Storage:	4 °C/-20 °C
Storage Comment:	Store at 4 °C, following reconstitution, aliquot and store at -20 °C.

Images



Immunohistochemistry

Image 1. ZNF266 antibody was used for immunohistochemistry at a concentration of 4-8 µg/ml to stain Purkinje cells (arrows) in Human Cerebellum. Magnification is at 400X



Western Blotting

Image 2. ZNF266 antibody used at 1.25 ug/ml to detect target protein.