

Datasheet for ABIN927542
anti-VEZF1 antibody (Middle Region)



[Go to Product page](#)

2 Images

Overview

Quantity:	100 µL
Target:	VEZF1
Binding Specificity:	Middle Region
Reactivity:	Human, Mouse, Rat, Zebrafish (Danio rerio), Cow, Dog, Xenopus laevis
Host:	Rabbit
Clonality:	Polyclonal
Conjugate:	This VEZF1 antibody is un-conjugated
Application:	Western Blotting (WB)

Product Details

Immunogen:	VEZF1 antibody was raised in rabbit using the middle region of VEZF1 as the immunogen
Cross-Reactivity:	Mouse (Murine), Rat (Rattus), Cow (Bovine), Dog (Canine), Zebrafish (Brachydanio rerio), Frog
Purification:	Purified

Target Details

Target:	VEZF1
Alternative Name:	VEZF1 (VEZF1 Products)
Background:	VEZF1 is a possible transcription factor. It specifically binds to the CT/GC-rich region of the interleukin-3 promoter and mediates tax transactivation of IL-3. Transcriptional regulatory proteins containing tandemly repeated zinc finger domains are thought to be involved in both normal and abnormal cellular proliferation and differentiation. ZNF161 is a C2H2-type zinc

Target Details

finger protein. Synonyms: Polyclonal VEZF1 antibody, Anti-VEZF1 antibody, vascular endothelial zinc finger 1 antibody, DB1 antibody, ZNF161 antibody.

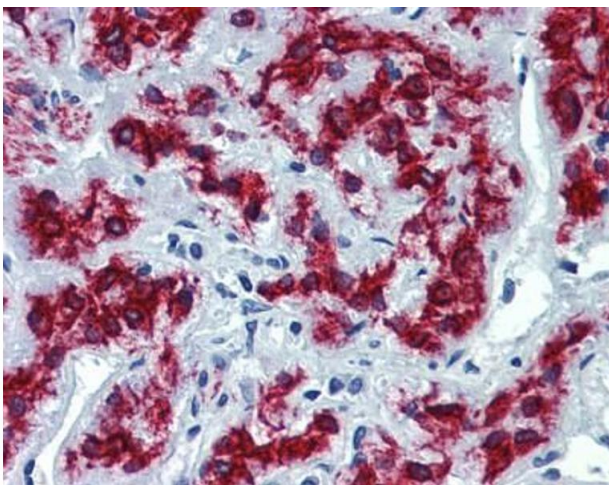
Application Details

Application Notes:	Optimal conditions should be determined by the investigator.
Comment:	VEZF1 Blocking Peptide, catalog no. 33R-8334, is also available for use as a blocking control in assays to test for specificity of this VEZF1 antibody
Restrictions:	For Research Use only

Handling

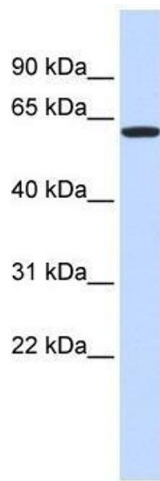
Format:	Lyophilized
Concentration:	Lot specific
Buffer:	Lyophilized powder. Add 50 μ L of distilled water. Final antibody concentration is 1 mg/mL in PBS buffer.
Handling Advice:	Avoid repeated freeze/thaw cycles.
Storage:	4 $^{\circ}$ C/-20 $^{\circ}$ C
Storage Comment:	Store at 4 $^{\circ}$ C, following reconstitution, aliquot and store at -20 $^{\circ}$ C.

Images



Immunohistochemistry

Image 1. VEZF1 antibody was used for immunohistochemistry at a concentration of 4-8 μ g/ml. Magnification is at 400X



Western Blotting

Image 2. Western Blot showing VEZF1 antibody used at a concentration of 1.0 ug/ml against 293T Cell Lysate