

Datasheet for ABIN927549
anti-ZBTB26 antibody (Middle Region)



[Go to Product page](#)

1 Image

Overview

Quantity:	100 µL
Target:	ZBTB26
Binding Specificity:	Middle Region
Reactivity:	Human, Mouse, Rat, Dog
Host:	Rabbit
Clonality:	Polyclonal
Conjugate:	This ZBTB26 antibody is un-conjugated
Application:	Western Blotting (WB)

Product Details

Immunogen:	ZBTB26 antibody was raised in rabbit using the middle region of ZBTB26 as the immunogen
Cross-Reactivity:	Dog (Canine), Rat (Rattus), Mouse (Murine)
Purification:	Purified

Target Details

Target:	ZBTB26
Alternative Name:	ZBTB26 (ZBTB26 Products)
Background:	ZBTB26 contains 4 C2H2-type zinc fingers. It may be involved in transcriptional regulation. Synonyms: Polyclonal ZBTB26 antibody, Anti-ZBTB26 antibody, zinc finger and BTB domain containing 26 antibody.

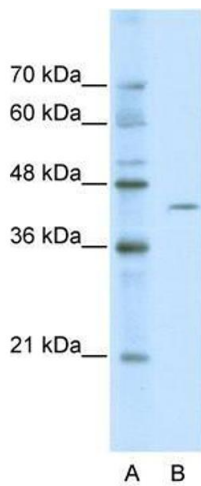
Application Details

Application Notes:	WB: 0.2-1 µg/mL Optimal conditions should be determined by the investigator.
Comment:	ZBTB26 Blocking Peptide, catalog no. 33R-7594, is also available for use as a blocking control in assays to test for specificity of this ZBTB26 antibody
Restrictions:	For Research Use only

Handling

Format:	Lyophilized
Concentration:	Lot specific
Buffer:	Lyophilized powder. Add 50 µL of distilled water. Final antibody concentration is 1 mg/mL in PBS buffer.
Handling Advice:	Avoid repeated freeze/thaw cycles.
Storage:	4 °C/-20 °C
Storage Comment:	Store at 4 °C, following reconstitution, aliquot and store at -20 °C.

Images



Western Blotting

Image 1. ZBTB26 antibody used at 0.2-1 ug/ml to detect target protein.