

Datasheet for ABIN927568
anti-KLF14 antibody (N-Term)



[Go to Product page](#)

1 Image

Overview

Quantity:	100 µL
Target:	KLF14
Binding Specificity:	N-Term
Reactivity:	Human, Dog, Pig
Host:	Rabbit
Clonality:	Polyclonal
Conjugate:	This KLF14 antibody is un-conjugated
Application:	Western Blotting (WB)

Product Details

Immunogen:	KLF14 antibody was raised in rabbit using the N terminal of KLF14 as the immunogen
Cross-Reactivity:	Dog (Canine), Pig (Porcine)
Purification:	Purified

Target Details

Target:	KLF14
Alternative Name:	KLF14 (KLF14 Products)
Background:	KLF14 belongs to the Sp1 C2H2-type zinc-finger protein family. It contains 3 C2H2-type zinc fingers. The exact function of KLF14 is not known. Synonyms: Polyclonal KLF14 antibody, Anti-KLF14 antibody, Kruppel-like factor 14 antibody, BTEB5 antibody.

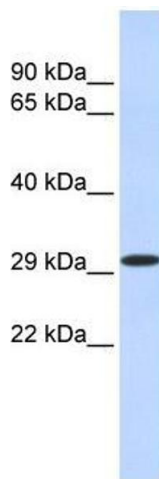
Application Details

Application Notes:	WB: 0.2-1 µg/mL Optimal conditions should be determined by the investigator.
Comment:	KLF14 Blocking Peptide, catalog no. 33R-8288, is also available for use as a blocking control in assays to test for specificity of this KLF14 antibody
Restrictions:	For Research Use only

Handling

Format:	Lyophilized
Concentration:	Lot specific
Buffer:	Lyophilized powder. Add 50 µL of distilled water. Final antibody concentration is 1 mg/mL in PBS buffer.
Handling Advice:	Avoid repeated freeze/thaw cycles.
Storage:	4 °C/-20 °C
Storage Comment:	Store at 4 °C, following reconstitution, aliquot and store at -20 °C.

Images



Western Blotting

Image 1. KLF14 antibody used at 1.25 µg/ml to detect target protein.