

Datasheet for ABIN927571  
**anti-PRDM15 antibody (C-Term)**



[Go to Product page](#)

1 Image

## Overview

Quantity:	100 µL
Target:	PRDM15
Binding Specificity:	C-Term
Reactivity:	Human, Mouse, Rat, Cow, Dog, Chicken
Host:	Rabbit
Clonality:	Polyclonal
Conjugate:	This PRDM15 antibody is un-conjugated
Application:	Western Blotting (WB)

## Product Details

Immunogen:	PRDM15 antibody was raised in rabbit using the C terminal of PRDM15 as the immunogen
Cross-Reactivity:	Mouse (Murine), Rat (Rattus), Cow (Bovine), Dog (Canine), Chicken
Purification:	Purified

## Target Details

Target:	PRDM15
Alternative Name:	PRDM15 ( <a href="#">PRDM15 Products</a> )
Background:	PRDM15 may be involved in transcriptional regulation. Synonyms: Polyclonal PRDM15 antibody, Anti-PRDM15 antibody, PR domain containing 15 antibody, C21orf83 antibody, PFM15 antibody, ZNF298 antibody.

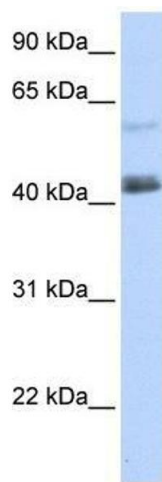
## Application Details

Application Notes:	WB: 0.2-1 µg/mL Optimal conditions should be determined by the investigator.
Comment:	PRDM15 Blocking Peptide, catalog no. 33R-8533, is also available for use as a blocking control in assays to test for specificity of this PRDM15 antibody
Restrictions:	For Research Use only

## Handling

Format:	Lyophilized
Concentration:	Lot specific
Buffer:	Lyophilized powder. Add 50 µL of distilled water. Final antibody concentration is 1 mg/mL in PBS buffer.
Handling Advice:	Avoid repeated freeze/thaw cycles.
Storage:	4 °C/-20 °C
Storage Comment:	Store at 4 °C, following reconstitution, aliquot and store at -20 °C.

## Images



### Western Blotting

**Image 1.** PRDM15 antibody used at 0.2-1 ug/ml to detect target protein.