

Datasheet for ABIN927579 **anti-ZNF641 antibody (Middle Region)**



[Go to Product page](#)

1 Image

Overview

Quantity:	100 µL
Target:	ZNF641
Binding Specificity:	Middle Region
Reactivity:	Human, Cow
Host:	Rabbit
Clonality:	Polyclonal
Conjugate:	This ZNF641 antibody is un-conjugated
Application:	Western Blotting (WB)

Product Details

Immunogen:	ZNF641 antibody was raised in rabbit using the middle region of ZNF641 as the immunogen
Cross-Reactivity:	Cow (Bovine)
Purification:	Purified

Target Details

Target:	ZNF641
Alternative Name:	ZNF641 (ZNF641 Products)
Background:	ZNF641 belongs to the krueppel C2H2-type zinc-finger protein family. It contains 5 C2H2-type zinc fingers and 1 KRAB domain. ZNF641 activates transcriptional activities of SRE and AP-1. Synonyms: Polyclonal ZNF641 antibody, Anti-ZNF641 antibody, zinc finger protein 641 antibody, DKFZp667D1012 antibody, FLJ31295 antibody.

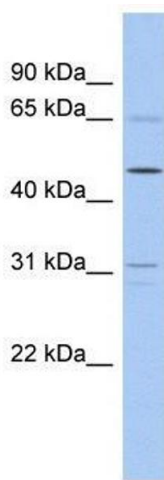
Application Details

Application Notes:	WB: 0.2-1 µg/mL Optimal conditions should be determined by the investigator.
Comment:	ZNF641 Blocking Peptide, catalog no. 33R-7849, is also available for use as a blocking control in assays to test for specificity of this ZNF641 antibody
Restrictions:	For Research Use only

Handling

Format:	Lyophilized
Concentration:	Lot specific
Buffer:	Lyophilized powder. Add 50 µL of distilled water. Final antibody concentration is 1 mg/mL in PBS buffer.
Handling Advice:	Avoid repeated freeze/thaw cycles.
Storage:	4 °C/-20 °C
Storage Comment:	Store at 4 °C, following reconstitution, aliquot and store at -20 °C.

Images



Western Blotting

Image 1. Western Blot showing ZNF641 antibody used at a concentration of 1-2 µg/ml to detect its target protein.