

Datasheet for ABIN927619 **anti-JAZF1 antibody (N-Term)**



[Go to Product page](#)

1 Image

Overview

Quantity:	100 µL
Target:	JAZF1
Binding Specificity:	N-Term
Reactivity:	Human, Mouse, Zebrafish (Danio rerio), Rat, Chicken
Host:	Rabbit
Clonality:	Polyclonal
Conjugate:	This JAZF1 antibody is un-conjugated
Application:	Western Blotting (WB)

Product Details

Immunogen:	JAZF1 antibody was raised in rabbit using the N terminal of JAZF1 as the immunogen
Cross-Reactivity:	Mouse (Murine), Rat (Rattus), Chicken, Zebrafish (Brachydanio rerio)
Purification:	Purified

Target Details

Target:	JAZF1
Alternative Name:	JAZF1 (JAZF1 Products)
Background:	JAZF1 is a nuclear protein with three C2H2-type zinc fingers, and functions as a transcriptional repressor. Chromosomal aberrations involving this gene are associated with endometrial stromal tumors. This gene encodes a nuclear protein with three C2H2-type zinc fingers, and functions as a transcriptional repressor. Chromosomal aberrations involving this gene are

Target Details

associated with endometrial stromal tumors. Alternatively spliced variants which encode different protein isoforms have been described, however, not all variants have been fully characterized. Synonyms: Polyclonal JAZF1 antibody, Anti-JAZF1 antibody, JAZF zinc finger 1 antibody, DKFZp761K2222 antibody, TIP27 antibody, ZNF802 antibody.

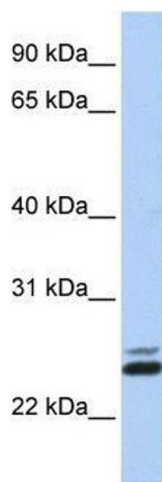
Application Details

Application Notes:	WB: 0.2-1 µg/mL Optimal conditions should be determined by the investigator.
Comment:	JAZF1 Blocking Peptide, catalog no. 33R-3932, is also available for use as a blocking control in assays to test for specificity of this JAZF1 antibody
Restrictions:	For Research Use only

Handling

Format:	Lyophilized
Concentration:	Lot specific
Buffer:	Lyophilized powder. Add 50 µL of distilled water. Final antibody concentration is 1 mg/mL in PBS buffer.
Handling Advice:	Avoid repeated freeze/thaw cycles.
Storage:	4 °C/-20 °C
Storage Comment:	Store at 4 °C, following reconstitution, aliquot and store at -20 °C.

Images



Western Blotting

Image 1. JAZF1 antibody used at 0.2-1 ug/ml to detect target protein.