

Datasheet for ABIN927643 **anti-MCM10 antibody (N-Term)**



[Go to Product page](#)

1 Image

Overview

Quantity:	100 µL
Target:	MCM10
Binding Specificity:	N-Term
Reactivity:	Human, Mouse
Host:	Rabbit
Clonality:	Polyclonal
Conjugate:	This MCM10 antibody is un-conjugated
Application:	Western Blotting (WB)

Product Details

Immunogen:	Mcm10 antibody was raised in rabbit using the N terminal of Mcm10 as the immunogen
Cross-Reactivity:	Mouse (Murine)
Purification:	Purified

Target Details

Target:	MCM10
Alternative Name:	Mcm10 (MCM10 Products)
Background:	Mcm10 acts as a replication initiation factor that brings together the MCM2-7 helicase and the DNA polymerase alpha/primase complex in order to initiate DNA replication. Additionally, plays a role in preventing DNA damage during replication. Synonyms: Polyclonal Mcm10 antibody, Anti-Mcm10 antibody, minichromosome maintenance deficient 10, <i>S. cerevisiae</i> antibody,

Target Details

2410041F14Rik antibody, AU018508 antibody, C330019M07Rik antibody, C79164 antibody.

Pathways: [Mitotic G1-G1/S Phases, DNA Replication](#)

Application Details

Application Notes: Optimal conditions should be determined by the investigator.

Comment: Mcm10 Blocking Peptide, catalog no. 33R-1899, is also available for use as a blocking control in assays to test for specificity of this Mcm10 antibody

Restrictions: For Research Use only

Handling

Format: Lyophilized

Concentration: Lot specific

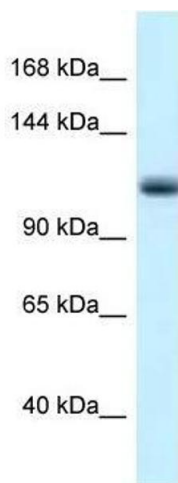
Buffer: Lyophilized powder. Add 50 μ L of distilled water. Final antibody concentration is 1 mg/mL in PBS buffer.

Handling Advice: Avoid repeated freeze/thaw cycles.

Storage: 4 $^{\circ}$ C/-20 $^{\circ}$ C

Storage Comment: Store at 4 $^{\circ}$ C, following reconstitution, aliquot and store at -20 $^{\circ}$ C.

Images



Western Blotting

Image 1. Western Blot showing Mcm10 antibody used at a concentration of 1.0 μ g/ml against Mouse Pancreas Lysate