

Datasheet for ABIN927647
anti-ACD antibody (C-Term)



[Go to Product page](#)

1 Image

Overview

Quantity:	100 µL
Target:	ACD
Binding Specificity:	C-Term
Reactivity:	Mouse
Host:	Rabbit
Clonality:	Polyclonal
Conjugate:	This ACD antibody is un-conjugated
Application:	Western Blotting (WB)

Product Details

Immunogen:	Acd antibody was raised in rabbit using the c terminal of Acd as the immunogen
Purification:	Purified

Target Details

Target:	ACD
Alternative Name:	Acd (ACD Products)
Background:	Acd is a component of the shelterin complex (telosome) that is involved in the regulation of telomere length and protection. Shelterin associates with arrays of double-stranded TTAGGG repeats added by telomerase and protects chromosome ends, without its protective activity, telomeres are no longer hidden from the DNA damage surveillance and chromosome ends are inappropriately processed by DNA repair pathways. Acd promotes binding of POT1 to single-

Target Details

stranded telomeric DNA. Acd modulates the inhibitory effects of POT1 on telomere elongation. The ACD-POT1 heterodimer enhances telomere elongation by increasing telomerase processivity. Acd plays a role in shelterin complex assembly. Acd may play an essential role in organogenesis of the developing embryo. Synonyms: Polyclonal Acd antibody, Anti-Acd antibody, adrenocortical dysplasia antibody.

Pathways: [Telomere Maintenance](#)

Application Details

Application Notes: WB: 0.2-1 µg/mL
Optimal conditions should be determined by the investigator.

Comment: Acd Blocking Peptide, catalog no. 33R-7345, is also available for use as a blocking control in assays to test for specificity of this Acd antibody

Restrictions: For Research Use only

Handling

Format: Lyophilized

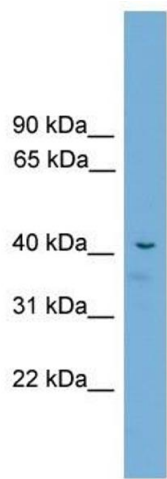
Concentration: Lot specific

Buffer: Lyophilized powder. Add 50 µL of distilled water. Final antibody concentration is 1 mg/mL in PBS buffer.

Handling Advice: Avoid repeated freeze/thaw cycles.

Storage: 4 °C/-20 °C

Storage Comment: Store at 4 °C, following reconstitution, aliquot and store at -20 °C.



Western Blotting

Image 1. Acd antibody used at 2.5 ug/ml to detect target protein.