

Datasheet for ABIN927656
anti-SREBF1 antibody (N-Term)



[Go to Product page](#)

1 Image

Overview

Quantity:	100 µL
Target:	SREBF1
Binding Specificity:	N-Term
Reactivity:	Rat, Mouse
Host:	Rabbit
Clonality:	Polyclonal
Conjugate:	This SREBF1 antibody is un-conjugated
Application:	Western Blotting (WB)

Product Details

Immunogen:	SREBF1 antibody was raised in rabbit using the N terminal of SREBF1 as the immunogen
Cross-Reactivity:	Rat (Rattus)
Purification:	Purified

Target Details

Target:	SREBF1
Alternative Name:	SREBF1 (SREBF1 Products)
Background:	Srebf1 is transcriptional activator that binds to the sterol regulatory element 1 (SRE-1) (5'-ATCACCCAC-3'). Srebf1 also binds to an E-box motif (5'-ATCACGTGA-3'). Srebf1 regulates the transcription of genes for sterol biosynthesis and the LDL receptor gene. Synonyms: Polyclonal SREBF1 antibody, Anti-SREBF1 antibody.

Target Details

Pathways: [AMPK Signaling](#), [Caspase Cascade in Apoptosis](#), [Negative Regulation of Hormone Secretion](#), [Regulation of Lipid Metabolism by PPARalpha](#)

Application Details

Application Notes: WB: 0.2-1 µg/mL
Optimal conditions should be determined by the investigator.

Comment: SREBF1 Blocking Peptide, catalog no. 33R-1993, is also available for use as a blocking control in assays to test for specificity of this SREBF1 antibody

Restrictions: For Research Use only

Handling

Format: Lyophilized

Concentration: Lot specific

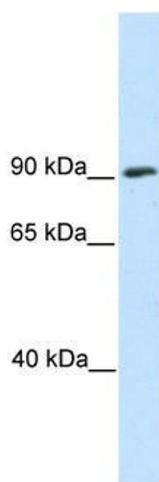
Buffer: Lyophilized powder. Add 50 µL of distilled water. Final antibody concentration is 1 mg/mL in PBS buffer.

Handling Advice: Avoid repeated freeze/thaw cycles.

Storage: 4 °C/-20 °C

Storage Comment: Store at 4 °C, following reconstitution, aliquot and store at -20 °C.

Images



Western Blotting

Image 1. Western Blot showing SREBF1 antibody used at a concentration of 1-2 ug/ml to detect its target protein.