

Datasheet for ABIN927664
anti-Lcor antibody (N-Term)



[Go to Product page](#)

1 Image

Overview

Quantity:	100 µL
Target:	Lcor
Binding Specificity:	N-Term
Reactivity:	Human, Rat, Mouse, Cow, Dog, Chicken
Host:	Rabbit
Clonality:	Polyclonal
Conjugate:	This Lcor antibody is un-conjugated
Application:	Western Blotting (WB)

Product Details

Immunogen:	A630025 C25 IK antibody was raised in rabbit using the N terminal of A630025 25 IK as the immunogen
Cross-Reactivity:	Human, Rat (Rattus), Dog (Canine), Cow (Bovine), Chicken
Purification:	Purified

Target Details

Target:	Lcor
Alternative Name:	A630025C20RIK (Lcor Products)
Background:	A630025C20RIK has not been widely studied and its function is yet to be elucidated fully. Synonyms: Polyclonal A630025C20RIK antibody, Anti-A630025C20RIK antibody.

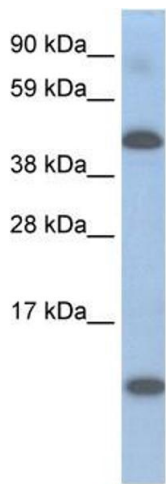
Application Details

Application Notes:	WB: 0.2-1 µg/mL Optimal conditions should be determined by the investigator.
Comment:	A630025C20RIK Blocking Peptide, catalog no. 33R-7691, is also available for use as a blocking control in assays to test for specificity of this A630025C20RIK antibody
Restrictions:	For Research Use only

Handling

Format:	Lyophilized
Concentration:	Lot specific
Buffer:	Lyophilized powder. Add 50 µL of distilled water. Final antibody concentration is 1 mg/mL in PBS buffer.
Handling Advice:	Avoid repeated freeze/thaw cycles.
Storage:	4 °C/-20 °C
Storage Comment:	Store at 4 °C, following reconstitution, aliquot and store at -20 °C.

Images



Western Blotting

Image 1. A630025C20RIK antibody used at 0.2-1 µg/ml to detect target protein.