

Datasheet for ABIN927667
anti-ZBTB38 antibody (N-Term)



[Go to Product page](#)

1 Image

Overview

Quantity:	100 µL
Target:	ZBTB38
Binding Specificity:	N-Term
Reactivity:	Human, Rat, Mouse, Pig, Chicken
Host:	Rabbit
Clonality:	Polyclonal
Conjugate:	This ZBTB38 antibody is un-conjugated
Application:	Western Blotting (WB)

Product Details

Immunogen:	ZBTB38 antibody was raised in rabbit using the N terminal of ZBTB38 as the immunogen
Cross-Reactivity:	Rat (Rattus), Human, Pig (Porcine), Chicken
Purification:	Purified

Target Details

Target:	ZBTB38
Alternative Name:	ZBTB38 (ZBTB38 Products)
Background:	ZBTB38 physically associates with CtBP via a conserved CtBP binding motif, PLDLR. When heterologously targeted to DNA, it represses transcription via two independent repression domains, an N-terminal BTB domain and a PLDLR motif-containing RD2 region, in a histone deacetylase-independent and -dependent manner, respectively. Synonyms: Polyclonal ZBTB38

Target Details

antibody, Anti-ZBTB38 antibody.

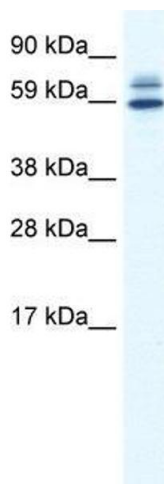
Application Details

Application Notes:	WB: 0.2-1 µg/mL Optimal conditions should be determined by the investigator.
Comment:	ZBTB38 Blocking Peptide, catalog no. 33R-2318, is also available for use as a blocking control in assays to test for specificity of this ZBTB38 antibody
Restrictions:	For Research Use only

Handling

Format:	Lyophilized
Concentration:	Lot specific
Buffer:	Lyophilized powder. Add 50 µL of distilled water. Final antibody concentration is 1 mg/mL in PBS buffer.
Handling Advice:	Avoid repeated freeze/thaw cycles.
Storage:	4 °C/-20 °C
Storage Comment:	Store at 4 °C, following reconstitution, aliquot and store at -20 °C.

Images



Western Blotting

Image 1. ZBTB38 antibody used at 0.2-1 ug/ml to detect target protein.