

Datasheet for ABIN927669 **anti-E2F7 antibody (N-Term)**

2 Images



[Go to Product page](#)

Overview

Quantity:	100 µL
Target:	E2F7
Binding Specificity:	N-Term
Reactivity:	Human, Mouse, Dog, Rat, Cow
Host:	Rabbit
Clonality:	Polyclonal
Conjugate:	This E2F7 antibody is un-conjugated
Application:	Western Blotting (WB), Immunohistochemistry (IHC)

Product Details

Immunogen:	E2 f7 antibody was raised in rabbit using the N terminal of E2 7 as the immunogen
Cross-Reactivity:	Rat (Rattus), Cow (Bovine), Dog (Canine), Human
Purification:	Purified

Target Details

Target:	E2F7
Alternative Name:	E2f7 (E2F7 Products)
Background:	E2F7 is a E2F family member. It can block the E2F-dependent activation of a subset of E2F target genes as well as mitigate cellular proliferation of mouse embryo fibroblasts. Synonyms: Polyclonal E2f7 antibody, Anti-E2f7 antibody, E2F transcription factor 7 antibody, A630014C11Rik antibody, D10ErtD739e antibody.

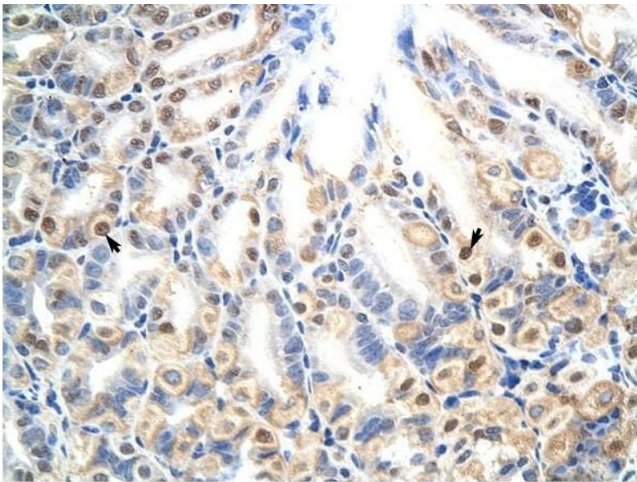
Application Details

Application Notes:	WB: 0.2-1 µg/mL Optimal conditions should be determined by the investigator.
Comment:	E2f7 Blocking Peptide, catalog no. 33R-5979, is also available for use as a blocking control in assays to test for specificity of this E2f7 antibody
Restrictions:	For Research Use only

Handling

Format:	Lyophilized
Concentration:	Lot specific
Buffer:	Lyophilized powder. Add 50 µL of distilled water. Final antibody concentration is 1 mg/mL in PBS buffer.
Handling Advice:	Avoid repeated freeze/thaw cycles.
Storage:	4 °C/-20 °C
Storage Comment:	Store at 4 °C, following reconstitution, aliquot and store at -20 °C.

Images



Immunohistochemistry

Image 1. E2f7 antibody was used for immunohistochemistry at a concentration of 4-8 µg/ml to stain Epithelial cells of fundic gland (arrows) in Mouse Stomach. Magnification is at 400X



Western Blotting

Image 2. E2f7 antibody used at 1.25 ug/ml to detect target protein.