

## Datasheet for ABIN927674 **anti-SSX2 antibody (C-Term)**



[Go to Product page](#)

### 1 Image

#### Overview

Quantity:	100 µL
Target:	SSX2
Binding Specificity:	C-Term
Reactivity:	Human
Host:	Rabbit
Clonality:	Polyclonal
Conjugate:	This SSX2 antibody is un-conjugated
Application:	Western Blotting (WB)

#### Product Details

Immunogen:	SSX2 antibody was raised in rabbit using the C terminal of SSX2 as the immunogen
Purification:	Purified

#### Target Details

Target:	SSX2
Alternative Name:	SSX2 ( <a href="#">SSX2 Products</a> )
Background:	SSX2 belongs to the family of highly homologous synovial sarcoma X (SSX) breakpoint proteins. These proteins may function as transcriptional repressors. They are also capable of eliciting spontaneously humoral and cellular immune responses in cancer patients, and are potentially useful targets in cancer vaccine-based immunotherapy. SSX1, SSX2 and SSX4 genes have been involved in the t(X,18) translocation characteristically found in all synovial

## Target Details

---

sarcomas. This translocation results in the fusion of the synovial sarcoma translocation gene on chromosome 18 to one of the SSX genes on chromosome X. The encoded hybrid proteins are probably responsible for transforming activity. Two transcript variants encoding distinct isoforms have been identified for this gene. Synonyms: Polyclonal SSX2 antibody, Anti-SSX2 antibody, synovial sarcoma, X breakpoint 2 antibody, HD21 antibody, HOM-MEL-40 antibody, MGC119055 antibody, MGC15364 antibody, MGC3884 antibody, SSX antibody.

## Application Details

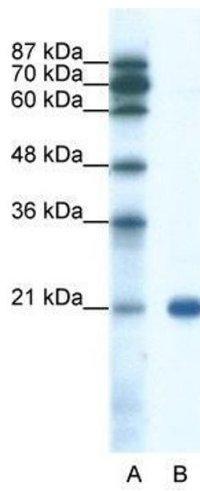
---

Application Notes:	WB: 0.2-1 µg/mL Optimal conditions should be determined by the investigator.
Comment:	SSX2 Blocking Peptide, catalog no. 33R-3849, is also available for use as a blocking control in assays to test for specificity of this SSX2 antibody
Restrictions:	For Research Use only

## Handling

---

Format:	Lyophilized
Concentration:	Lot specific
Buffer:	Lyophilized powder. Add 50 µL of distilled water. Final antibody concentration is 1 mg/mL in PBS buffer.
Handling Advice:	Avoid repeated freeze/thaw cycles.
Storage:	4 °C/-20 °C
Storage Comment:	Store at 4 °C, following reconstitution, aliquot and store at -20 °C.



### Western Blotting

**Image 1.** SSX2 antibody used at 0.2-1 ug/ml to detect target protein.