

Datasheet for ABIN927686
anti-SOHLH1 antibody (Middle Region)



[Go to Product page](#)

1 Image

Overview

Quantity:	100 µL
Target:	SOHLH1
Binding Specificity:	Middle Region
Reactivity:	Mouse
Host:	Rabbit
Clonality:	Polyclonal
Conjugate:	This SOHLH1 antibody is un-conjugated
Application:	Western Blotting (WB)

Product Details

Immunogen:	Sohlh1 antibody was raised in rabbit using the middle region of Sohlh1 as the immunogen
Purification:	Purified

Target Details

Target:	SOHLH1
Alternative Name:	Sohlh1 (SOHLH1 Products)
Background:	The function of this protein remains unknown. Synonyms: Polyclonal Sohlh1 antibody, Anti-Sohlh1 antibody, spermatogenesis and oogenesis specific basic helix-loop-helix 1 antibody, Gm110 antibody, Nohlh antibody.

Application Details

Application Notes: WB: 0.2-1 µg/mL
Optimal conditions should be determined by the investigator.

Restrictions: For Research Use only

Handling

Format: Lyophilized

Concentration: Lot specific

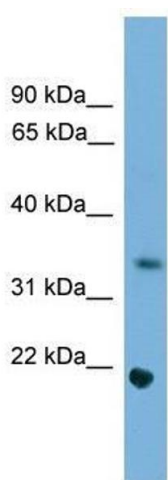
Buffer: Lyophilized powder. Add 50 µL of distilled water. Final antibody concentration is 1 mg/mL in PBS buffer.

Handling Advice: Avoid repeated freeze/thaw cycles.

Storage: 4 °C/-20 °C

Storage Comment: Store at 4 °C, following reconstitution, aliquot and store at -20 °C.

Images



Western Blotting

Image 1. Western Blot showing Sohlh1 antibody used at a concentration of 1-2 ug/ml to detect its target protein.