

Datasheet for ABIN927693
anti-CSRP2 antibody (C-Term)



[Go to Product page](#)

1 Image

Overview

Quantity:	100 µL
Target:	CSRP2
Binding Specificity:	C-Term
Reactivity:	Human, Mouse, Rat, Chicken, Cow, Zebrafish (Danio rerio), Xenopus laevis
Host:	Rabbit
Clonality:	Polyclonal
Conjugate:	This CSRP2 antibody is un-conjugated
Application:	Western Blotting (WB)

Product Details

Immunogen:	CSRP2 antibody was raised in rabbit using the C terminal of CSRP2 as the immunogen
Cross-Reactivity:	Mouse (Murine), Rat (Rattus), Frog, Cow (Bovine), Chicken, Zebrafish (Brachydanio rerio)
Purification:	Purified

Target Details

Target:	CSRP2
Alternative Name:	CSRP2 (CSRP2 Products)
Background:	CSRP2 is a member of the CSRP family. CSRP family is a group of LIM domain proteins, which may be involved in regulatory processes important for development and cellular differentiation. CRP2 contains two copies of the cysteine-rich amino acid sequence motif (LIM) with putative zinc-binding activity, and may be involved in regulating ordered cell growth. Other genes in the

Target Details

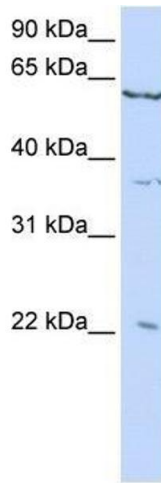
family include CSRP1 and CSRP3. CSRP2 is a member of the CSRP family of genes, encoding a group of LIM domain proteins, which may be involved in regulatory processes important for development and cellular differentiation. CRP2 contains two copies of the cysteine-rich amino acid sequence motif (LIM) with putative zinc-binding activity, and may be involved in regulating ordered cell growth. Other genes in the family include CSRP1 and CSRP3. Synonyms: Polyclonal CSRP2 antibody, Anti-CSRP2 antibody, cysteine and glycine-rich protein 2 antibody, CRP2 antibody, LMO5 antibody, SmLIM antibody.

Application Details

Application Notes:	WB: 0.2-1 µg/mL Optimal conditions should be determined by the investigator.
Comment:	CSRP2 Blocking Peptide, catalog no. 33R-3039, is also available for use as a blocking control in assays to test for specificity of this CSRP2 antibody
Restrictions:	For Research Use only

Handling

Format:	Lyophilized
Concentration:	Lot specific
Buffer:	Lyophilized powder. Add 50 µL of distilled water. Final antibody concentration is 1 mg/mL in PBS buffer.
Handling Advice:	Avoid repeated freeze/thaw cycles.
Storage:	4 °C/-20 °C
Storage Comment:	Store at 4 °C, following reconstitution, aliquot and store at -20 °C.



Western Blotting

Image 1. CSRP2 antibody used at 0.2-1 ug/ml to detect target protein.