

Datasheet for ABIN927699 **anti-IGHMBP2 antibody (N-Term)**



[Go to Product page](#)

1 Image

Overview

Quantity:	100 µL
Target:	IGHMBP2
Binding Specificity:	N-Term
Reactivity:	Human, Mouse
Host:	Rabbit
Clonality:	Polyclonal
Conjugate:	This IGHMBP2 antibody is un-conjugated
Application:	Western Blotting (WB)

Product Details

Immunogen:	Ighmbp2 antibody was raised in rabbit using the N terminal of Ighmbp2 as the immunogen
Cross-Reactivity:	Mouse (Murine)
Purification:	Purified

Target Details

Target:	IGHMBP2
Alternative Name:	Ighmbp2 (IGHMBP2 Products)
Background:	Ighmbp2 is a 5' to 3' helicase that unwinds RNA and DNA duplicates in an ATP-dependent reaction. Ighmbp2 acts as a transcription regulator. Ighmbp2 is required for the transcriptional activation of the flounder liver-type antifreeze protein gene. Ighmbp2 exhibits strong binding specificity to the enhancer element B of the flounder antifreeze protein gene intron. Ighmbp2

Target Details

binds to the insulin II gene RIPE3B enhancer region.

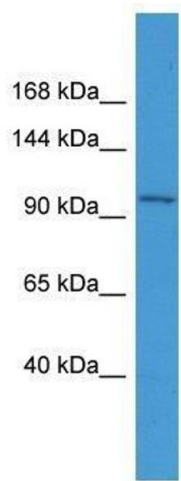
Synonyms: Polyclonal Ighmbp2 antibody, Anti-Ighmbp2 antibody, immunoglobulin mu binding protein 2 antibody, AEP antibody, Catf1 antibody, RIPE3b1 antibody, Smbp-2 antibody, Smbp2 antibody, Smubp2 antibody, nmd antibody, sma antibody.

Application Details

Application Notes:	WB: 0.2-1 µg/mL Optimal conditions should be determined by the investigator.
Comment:	Ighmbp2 Blocking Peptide, catalog no. 33R-7630, is also available for use as a blocking control in assays to test for specificity of this Ighmbp2 antibody
Restrictions:	For Research Use only

Handling

Format:	Lyophilized
Reconstitution:	Add distilled water.
Concentration:	Lot specific
Buffer:	Lyophilized powder. Add 50 µL of distilled water. Final antibody concentration is 1 mg/mL in PBS buffer.
Handling Advice:	Avoid repeated freeze/thaw cycles.
Storage:	4 °C/-20 °C
Storage Comment:	Store at 4 °C, following reconstitution, aliquot and store at -20 °C.



Western Blotting

Image 1. Ighmbp2 antibody used at 0.2-1 ug/ml to detect target protein.