

Datasheet for ABIN927701

anti-Phospholipase D2 antibody (N-Term)[Go to Product page](#)**1** Image

Overview

Quantity:	100 µL
Target:	Phospholipase D2 (PLD2)
Binding Specificity:	N-Term
Reactivity:	Human, Mouse, Cow
Host:	Rabbit
Clonality:	Polyclonal
Conjugate:	This Phospholipase D2 antibody is un-conjugated
Application:	Western Blotting (WB)

Product Details

Immunogen:	PLD2 antibody was raised in rabbit using the N terminal of PLD2 as the immunogen
Cross-Reactivity:	Mouse (Murine), Cow (Bovine)
Purification:	Purified

Target Details

Target:	Phospholipase D2 (PLD2)
Alternative Name:	PLD2 (PLD2 Products)
Background:	Phosphatidylcholine (PC)-specific phospholipases D (PLDs, EC 3.1.4.4) catalyze the hydrolysis of PC to produce phosphatidic acid and choline. Activation of PC-specific PLDs occurs as a consequence of agonist stimulation of both tyrosine kinase and G protein-coupled receptors. PC-specific PLDs have been proposed to function in regulated secretion, cytoskeletal

Target Details

reorganization, transcriptional regulation, and cell cycle control. Synonyms: Polyclonal PLD2 antibody, Anti-PLD2 antibody, phospholipase D2 antibody.

Pathways: [RTK Signaling](#), [Regulation of Leukocyte Mediated Immunity](#), [Positive Regulation of Immune Effector Process](#), [Regulation of G-Protein Coupled Receptor Protein Signaling](#)

Application Details

Application Notes: WB: 0.2-1 µg/mL
Optimal conditions should be determined by the investigator.

Comment: PLD2 Blocking Peptide, catalog no. 33R-6532, is also available for use as a blocking control in assays to test for specificity of this PLD2 antibody

Restrictions: For Research Use only

Handling

Format: Lyophilized

Concentration: Lot specific

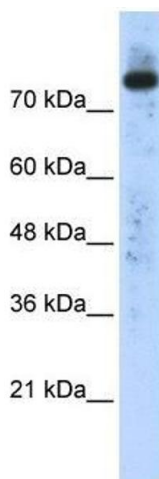
Buffer: Lyophilized powder. Add 50 µL of distilled water. Final antibody concentration is 1 mg/mL in PBS buffer.

Handling Advice: Avoid repeated freeze/thaw cycles.

Storage: 4 °C/-20 °C

Storage Comment: Store at 4 °C, following reconstitution, aliquot and store at -20 °C.

Images



Western Blotting

Image 1. PLD2 antibody used at 0.2-1 ug/ml to detect target protein.