

Datasheet for ABIN927702 **anti-Recoverin antibody (C-Term)**

[Go to Product page](#)

1 Image

Overview

| | |
|----------------------|--|
| Quantity: | 100 µL |
| Target: | Recoverin (RCVRN) |
| Binding Specificity: | C-Term |
| Reactivity: | Human, Rat, Cow, Dog |
| Host: | Rabbit |
| Clonality: | Polyclonal |
| Conjugate: | This Recoverin antibody is un-conjugated |
| Application: | Western Blotting (WB) |

Product Details

| | |
|-------------------|--|
| Immunogen: | RCV1 antibody was raised in rabbit using the C terminal of RCV1 as the immunogen |
| Cross-Reactivity: | Rat (Rattus), Cow (Bovine), Dog (Canine) |
| Purification: | Purified |

Target Details

| | |
|-------------------|--|
| Target: | Recoverin (RCVRN) |
| Alternative Name: | RCV1 (RCVRN Products) |
| Background: | RCV1 is a member of the recoverin family of neuronal calcium sensors. RCV1 contains three calcium-binding EF-hand domains and may prolong the termination of the phototransduction cascade in the retina by blocking the phosphorylation of photo-activated rhodopsin. Recoverin may be the antigen responsible for cancer-associated retinopathy. The protein encoded by this |

Target Details

gene contains four calcium-binding EF-hand domains and belongs to the recoverin family of neuronal calcium sensors. Recoverin may prolong the termination of the phototransduction cascade by blocking the phosphorylation of photo-activated rhodopsin. Recoverin may be the antigen responsible for cancer-associated retinopathy, an autoimmune disease of the retina caused by a tumor in another tissue. Synonyms: Polyclonal RCV1 antibody, Anti-RCV1 antibody.

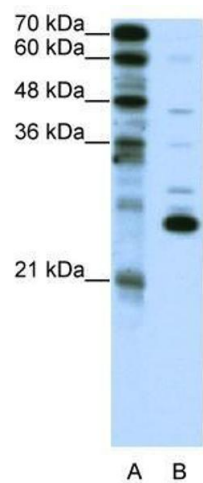
Pathways: [Regulation of G-Protein Coupled Receptor Protein Signaling](#), [Phototransduction](#)

Application Details

| | |
|--------------------|--|
| Application Notes: | WB: 0.2-1 µg/mL Optimal conditions should be determined by the investigator. |
| Comment: | RCV1 Blocking Peptide, catalog no. 33R-4553, is also available for use as a blocking control in assays to test for specificity of this RCV1 antibody |
| Restrictions: | For Research Use only |

Handling

| | |
|------------------|--|
| Format: | Lyophilized |
| Concentration: | Lot specific |
| Buffer: | Lyophilized powder. Add 50 µL of distilled water. Final antibody concentration is 1 mg/mL in PBS buffer. |
| Handling Advice: | Avoid repeated freeze/thaw cycles. |
| Storage: | 4 °C/-20 °C |
| Storage Comment: | Store at 4 °C, following reconstitution, aliquot and store at -20 °C. |



Western Blotting

Image 1. RCV1 antibody used at 2.5 ug/ml to detect target protein.