

Datasheet for ABIN927704  
**anti-HLTF antibody (N-Term)**



[Go to Product page](#)

1 Image

## Overview

|                      |                                     |
|----------------------|-------------------------------------|
| Quantity:            | 100 µL                              |
| Target:              | HLTF                                |
| Binding Specificity: | N-Term                              |
| Reactivity:          | Human, Mouse, Dog, Cow, Rabbit      |
| Host:                | Rabbit                              |
| Clonality:           | Polyclonal                          |
| Conjugate:           | This HLTF antibody is un-conjugated |
| Application:         | Western Blotting (WB)               |

## Product Details

|                   |  |
|-------------------|--|
| Immunogen:        | HLTF antibody was raised in rabbit using the N terminal of HLTF as the immunogen |
| Cross-Reactivity: | Mouse (Murine), Dog (Canine), Cow (Bovine), Rabbit                               |
| Purification:     | Purified   |

## Target Details

|                   |  |
|-------------------|--|
| Target:           | HLTF   |
| Alternative Name: | HLTF ( <a href="#">HLTF Products</a> )   |
| Background:       | SMARCA3 (HLTF) is a member of the SWI/SNF family. Members of this family have helicase and ATPase activities and are thought to regulate transcription of certain genes by altering the chromatin structure around those genes. SMARCA3 contains a RING finger DNA binding motif. Western blots using two different antibodies against two unique regions of this protein target |

## Target Details

---

confirm the same apparent molecular weight in our tests. Synonyms: Polyclonal HLTF antibody, Anti-HLTF antibody, helicase-like transcription factor antibody, HIP116 antibody, HIP116A antibody, HLTF1 antibody, RNF80 antibody, SMARCA3 antibody, SNF2L3 antibody, ZBU1 antibody.

## Application Details

---

|                    |  |
|--------------------|--|
| Application Notes: | WB: 0.2-1 µg/mL<br>Optimal conditions should be determined by the investigator.  |
| Comment:           | HLTF Blocking Peptide, catalog no. 33R-8942, is also available for use as a blocking control in assays to test for specificity of this HLTF antibody |
| Restrictions:      | For Research Use only  |

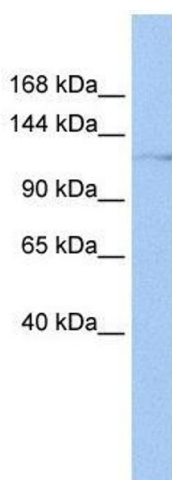
## Handling

---

|                  |  |
|------------------|--|
| Format:          | Lyophilized  |
| Concentration:   | Lot specific   |
| Buffer:          | Lyophilized powder. Add 50 µL of distilled water. Final antibody concentration is 1 mg/mL in PBS buffer. |
| Handling Advice: | Avoid repeated freeze/thaw cycles.   |
| Storage:         | 4 °C/-20 °C  |
| Storage Comment: | Store at 4 °C, following reconstitution, aliquot and store at -20 °C.                                    |

## Images

---



### Western Blotting

**Image 1.** HLTF antibody used at 0.2-1 ug/ml to detect target protein.