

Datasheet for ABIN927719 **anti-NFKBIE antibody (Middle Region)**



[Go to Product page](#)

1 Image

Overview

Quantity:	100 µL
Target:	NFKBIE
Binding Specificity:	Middle Region
Reactivity:	Human, Mouse, Rat, Cow
Host:	Rabbit
Clonality:	Polyclonal
Conjugate:	This NFKBIE antibody is un-conjugated
Application:	Western Blotting (WB)

Product Details

Immunogen:	NFKBIE antibody was raised in rabbit using the middle region of NFKBIE as the immunogen
Cross-Reactivity:	Mouse (Murine), Rat (Rattus), Cow (Bovine)
Purification:	Purified

Target Details

Target:	NFKBIE
Alternative Name:	NFKBIE (NFKBIE Products)
Background:	NFKB1 or NFKB2 is bound to REL, RELA, or RELB to form the NFKB complex. The NFKB complex is inhibited by I-kappa-B proteins, which inactivate NF- κ B. Synonyms: Polyclonal NFKBIE antibody, Anti-NFKBIE antibody, nuclear factor of kappa light polypeptide gene enhancer in B-cells inhibitor, epsilon antibody, IKBE antibody.

Target Details

Pathways: [NF-kappaB Signaling](#), [Maintenance of Protein Location](#)

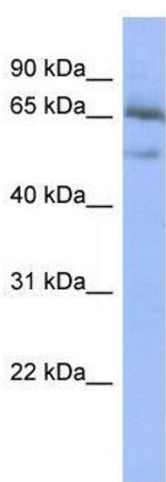
Application Details

Application Notes:	WB: 0.2-1 µg/mL Optimal conditions should be determined by the investigator.
Comment:	NFKBIE Blocking Peptide, catalog no. 33R-1862, is also available for use as a blocking control in assays to test for specificity of this NFKBIE antibody
Restrictions:	For Research Use only

Handling

Format:	Lyophilized
Concentration:	Lot specific
Buffer:	Lyophilized powder. Add 50 µL of distilled water. Final antibody concentration is 1 mg/mL in PBS buffer.
Handling Advice:	Avoid repeated freeze/thaw cycles.
Storage:	4 °C/-20 °C
Storage Comment:	Store at 4 °C, following reconstitution, aliquot and store at -20 °C.

Images



Western Blotting

Image 1. NFKBIE antibody used at 0.2-1 ug/ml to detect target protein.