

Datasheet for ABIN927722  
**anti-CEBPD antibody (Middle Region)**



[Go to Product page](#)

1 Image

## Overview

Quantity:	100 µL
Target:	CEBPD
Binding Specificity:	Middle Region
Reactivity:	Human, Mouse, Rat, Cow
Host:	Rabbit
Clonality:	Polyclonal
Conjugate:	This CEBPD antibody is un-conjugated
Application:	Western Blotting (WB)

## Product Details

Immunogen:	CEBPD antibody was raised in rabbit using the middle region of CEBPD as the immunogen
Cross-Reactivity:	Mouse (Murine), Rat (Rattus), Cow (Bovine)
Purification:	Purified

## Target Details

Target:	CEBPD
Alternative Name:	CEBPD ( <a href="#">CEBPD Products</a> )
Background:	CEBPD is a bZIP transcription factor which can bind as a homodimer to certain DNA regulatory regions. It can also form heterodimers with the related protein CEBP-alpha. Synonyms: Polyclonal CEBPD antibody, Anti-CEBPD antibody, CCAAT/enhancer binding protein, C/EBP, delta antibody, C/EBP-delta antibody, CELF antibody, CRP3 antibody, NF-IL6-beta antibody.

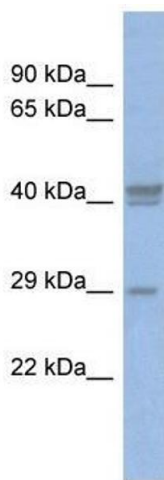
## Application Details

Application Notes:	WB: 0.2-1 µg/mL Optimal conditions should be determined by the investigator.
Comment:	CEBPD Blocking Peptide, catalog no. 33R-8081, is also available for use as a blocking control in assays to test for specificity of this CEBPD antibody
Restrictions:	For Research Use only

## Handling

Format:	Lyophilized
Concentration:	Lot specific
Buffer:	Lyophilized powder. Add 50 µL of distilled water. Final antibody concentration is 1 mg/mL in PBS buffer.
Handling Advice:	Avoid repeated freeze/thaw cycles.
Storage:	4 °C/-20 °C
Storage Comment:	Store at 4 °C, following reconstitution, aliquot and store at -20 °C.

## Images



### Western Blotting

**Image 1.** CEBPD antibody used at 0.25 ug/ml to detect target protein.