

## Datasheet for ABIN927726 **anti-MYB antibody (N-Term)**



[Go to Product page](#)

### 2 Images

#### Overview

Quantity:	100 µL
Target:	MYB
Binding Specificity:	N-Term
Reactivity:	Human, Mouse, Rat, Dog, Cow, Xenopus laevis, Chicken
Host:	Rabbit
Clonality:	Polyclonal
Conjugate:	This MYB antibody is un-conjugated
Application:	Western Blotting (WB), Immunohistochemistry (IHC)

#### Product Details

Immunogen:	MYB antibody was raised in rabbit using the N terminal of MYB as the immunogen
Cross-Reactivity:	Mouse (Murine), Rat (Rattus), Dog (Canine), Chicken, Cow (Bovine), Frog
Purification:	Purified

#### Target Details

Target:	MYB
Alternative Name:	MYB ( <a href="#">MYB Products</a> )
Background:	MYB may be a transcriptional activator, DNA-binding protein that specifically recognize the sequence 5'-YAAC[GT]G-3'. It plays an important role in the control of proliferation and differentiation of hematopoietic progenitor cells. Synonyms: Polyclonal MYB antibody, Anti-MYB antibody, v-myb myeloblastosis viral oncogene homolog, avian antibody, Cmyb antibody, c-myb

## Target Details

antibody, c-myb\_CDS antibody, efg antibody.

Pathways: [Chromatin Binding](#), [Positive Regulation of Immune Effector Process](#)

## Application Details

Application Notes: WB: 0.2-1 µg/mL  
Optimal conditions should be determined by the investigator.

Comment: MYB Blocking Peptide, catalog no. 33R-10068, is also available for use as a blocking control in assays to test for specificity of this MYB antibody

Restrictions: For Research Use only

## Handling

Format: Lyophilized

Concentration: Lot specific

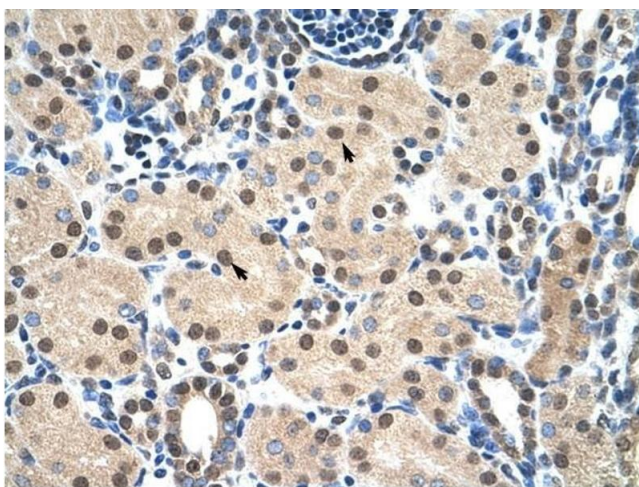
Buffer: Lyophilized powder. Add 50 µL of distilled water. Final antibody concentration is 1 mg/mL in PBS buffer.

Handling Advice: Avoid repeated freeze/thaw cycles.

Storage: 4 °C/-20 °C

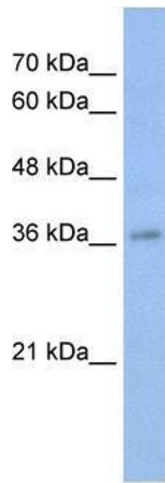
Storage Comment: Store at 4 °C, following reconstitution, aliquot and store at -20 °C.

## Images



### Immunohistochemistry

**Image 1.** MYB antibody was used for immunohistochemistry at a concentration of 4-8 µg/ml to stain Epithelial cells of renal tubule (arrows) in Human Kidney. Magnification is at 400X



### Western Blotting

**Image 2.** MYB antibody used at 0.2-1 ug/ml to detect target protein.