

Datasheet for ABIN927733
anti-SIX Homeobox 1 antibody (N-Term)



[Go to Product page](#)

1 Image

Overview

Quantity:	100 µL
Target:	SIX Homeobox 1 (SIX1)
Binding Specificity:	N-Term
Reactivity:	Human, Mouse
Host:	Rabbit
Clonality:	Polyclonal
Conjugate:	This SIX Homeobox 1 antibody is un-conjugated
Application:	Western Blotting (WB)

Product Details

Immunogen:	SIX1 antibody was raised in rabbit using the N terminal of Six1 as the immunogen
Cross-Reactivity:	Mouse (Murine)
Purification:	Purified

Target Details

Target:	SIX Homeobox 1 (SIX1)
Alternative Name:	SIX1 (SIX1 Products)
Background:	Six1 is a transcription factor that is involved in regulation of organogenesis. It seems to be required for development of kidney, muscle and inner ear and to be involved in later steps of myogenic differentiation. It may be involved in limb tendon and ligament development. It binds a 5'-TCA[AG][AG]TTNC-3' motif present in the MEF3 element in the myogenin promoter. It is

Target Details

thought to be regulated by association with Dach and Eya proteins. Synonyms: Polyclonal Six1 antibody, Anti-Six1 antibody, sine oculis-related homeobox 1 homolog, Drosophila antibody, BB138287 antibody.

Pathways: [Sensory Perception of Sound](#), [Regulation of Muscle Cell Differentiation](#), [Tube Formation](#), [Skeletal Muscle Fiber Development](#)

Application Details

Application Notes: Optimal conditions should be determined by the investigator.

Comment: SIX1 Blocking Peptide, catalog no. 33R-2703, is also available for use as a blocking control in assays to test for specificity of this SIX1 antibody

Restrictions: For Research Use only

Handling

Format: Lyophilized

Concentration: Lot specific

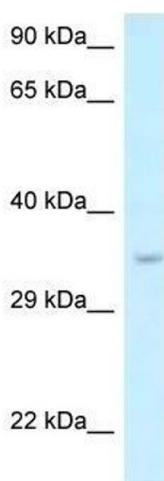
Buffer: Lyophilized powder. Add 50 μ L of distilled water. Final antibody concentration is 1 mg/mL in PBS buffer.

Handling Advice: Avoid repeated freeze/thaw cycles.

Storage: 4 $^{\circ}$ C/-20 $^{\circ}$ C

Storage Comment: Store at 4 $^{\circ}$ C, following reconstitution, aliquot and store at -20 $^{\circ}$ C.

Images



Western Blotting

Image 1. Western Blot showing Six1 antibody used at a concentration of 1.0 μ g/ml against Mouse Kidney Lysate