

Datasheet for ABIN927753
anti-LDOC1 antibody (N-Term)



[Go to Product page](#)

2 Images

Overview

Quantity:	100 µL
Target:	LDOC1
Binding Specificity:	N-Term
Reactivity:	Human, Cow
Host:	Rabbit
Clonality:	Polyclonal
Conjugate:	This LDOC1 antibody is un-conjugated
Application:	Western Blotting (WB)

Product Details

Immunogen:	LDOC1 antibody was raised in rabbit using the N terminal of LDOC1 as the immunogen
Cross-Reactivity:	Cow (Bovine)
Purification:	Purified

Target Details

Target:	LDOC1
Alternative Name:	LDOC1 (LDOC1 Products)
Background:	LDOC1 contains a leucine zipper-like motif and a proline-rich region that shares marked similarity with an SH3-binding domain. The protein localizes to the nucleus and is down-regulated in some cancer cell lines. It is thought to regulate the transcriptional response mediated by the nuclear factor kappa B (NF-kappaB). The gene has been proposed as a tumor

Target Details

suppressor gene whose protein product may have an important role in the development and/or progression of some cancers. Synonyms: Polyclonal LDOC1 antibody, Anti-LDOC1 antibody, leucine zipper, down-regulated in cancer 1 antibody, BCUR1 antibody, Mar7 antibody, Mart7 antibody.

Application Details

Application Notes:	WB: 0.2-1 µg/mL Optimal conditions should be determined by the investigator.
Comment:	LDOC1 Blocking Peptide, catalog no. 33R-6579, is also available for use as a blocking control in assays to test for specificity of this LDOC1 antibody
Restrictions:	For Research Use only

Handling

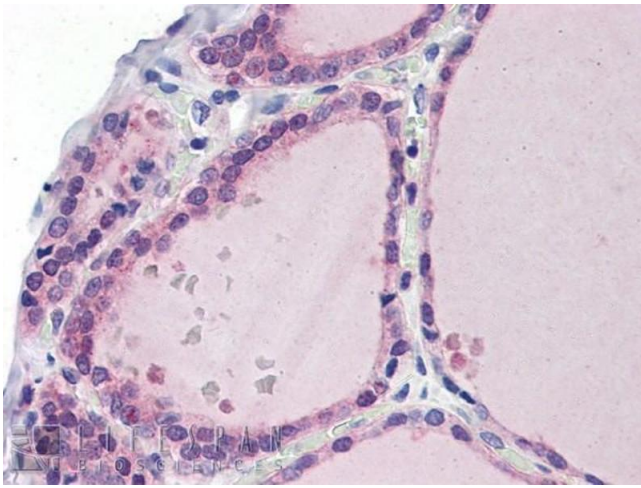
Format:	Lyophilized
Concentration:	Lot specific
Buffer:	Lyophilized powder. Add 50 µL of distilled water. Final antibody concentration is 1 mg/mL in PBS buffer.
Handling Advice:	Avoid repeated freeze/thaw cycles.
Storage:	4 °C/-20 °C
Storage Comment:	Store at 4 °C, following reconstitution, aliquot and store at -20 °C.

Images



Western Blotting

Image 1. LDOC1 antibody used at 0.2-1 ug/ml to detect target protein.



Immunohistochemistry

Image 2. LDOC1 antibody was used for immunohistochemistry at a concentration of 5.0 ug/ml to stain Human Thyroid. Magnification is at