

Datasheet for ABIN927755
anti-SPDEF/PSE antibody (C-Term)



[Go to Product page](#)

1 Image

Overview

Quantity:	100 µL
Target:	SPDEF/PSE (SPDEF)
Binding Specificity:	C-Term
Reactivity:	Human
Host:	Rabbit
Clonality:	Polyclonal
Conjugate:	This SPDEF/PSE antibody is un-conjugated
Application:	Western Blotting (WB)

Product Details

Immunogen:	SPDEF antibody was raised in rabbit using the C terminal of SPDEF as the immunogen
Purification:	Purified

Target Details

Target:	SPDEF/PSE (SPDEF)
Alternative Name:	SPDEF (SPDEF Products)
Background:	PDEF is an ETS transcription factor expressed in prostate epithelial cells. It acts as an androgen-independent transactivator of PSA expression. Synonyms: Polyclonal SPDEF antibody, Anti-SPDEF antibody, SAM pointed domain containing ets transcription factor antibody, PDEF antibody, RP11-375E1__A.3 antibody, bA375E1.3 antibody.

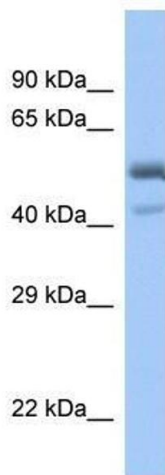
Application Details

Application Notes:	Optimal conditions should be determined by the investigator.
Comment:	SPDEF Blocking Peptide, catalog no. 33R-2949, is also available for use as a blocking control in assays to test for specificity of this SPDEF antibody
Restrictions:	For Research Use only

Handling

Format:	Lyophilized
Concentration:	Lot specific
Buffer:	Lyophilized powder. Add 50 μ L of distilled water. Final antibody concentration is 1 mg/mL in PBS buffer.
Handling Advice:	Avoid repeated freeze/thaw cycles.
Storage:	4 °C/-20 °C
Storage Comment:	Store at 4 °C, following reconstitution, aliquot and store at -20 °C.

Images



Western Blotting

Image 1. Western Blot showing SPDEF antibody used at a concentration of 1.0 μ g/ml against Fetal Muscle Lysate