

Datasheet for ABIN927767
anti-CDR2L antibody (N-Term)



[Go to Product page](#)

1 Image

Overview

Quantity:	100 µL
Target:	CDR2L
Binding Specificity:	N-Term
Reactivity:	Human
Host:	Rabbit
Clonality:	Polyclonal
Conjugate:	This CDR2L antibody is un-conjugated
Application:	Western Blotting (WB)

Product Details

Immunogen:	CDR2 L antibody was raised in rabbit using the N terminal of CDR2 as the immunogen
Purification:	Purified

Target Details

Target:	CDR2L
Alternative Name:	CDR2L (CDR2L Products)
Background:	The function of CDR2L remains unknown. Synonyms: Polyclonal CDR2L antibody, Anti-CDR2L antibody, cerebellar degeneration-related protein 2-like antibody, HUMPPA antibody.

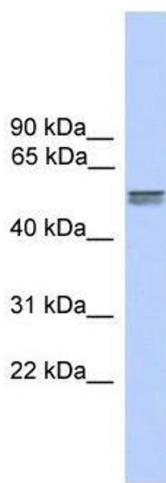
Application Details

Application Notes:	WB: 0.2-1 µg/mL Optimal conditions should be determined by the investigator.
Comment:	CDR2L Blocking Peptide, catalog no. 33R-6378, is also available for use as a blocking control in assays to test for specificity of this CDR2L antibody
Restrictions:	For Research Use only

Handling

Format:	Lyophilized
Concentration:	Lot specific
Buffer:	Lyophilized powder. Add 50 µL of distilled water. Final antibody concentration is 1 mg/mL in PBS buffer.
Handling Advice:	Avoid repeated freeze/thaw cycles.
Storage:	4 °C/-20 °C
Storage Comment:	Store at 4 °C, following reconstitution, aliquot and store at -20 °C.

Images



Western Blotting

Image 1. CDR2L antibody used at 0.2-1 ug/ml to detect target protein.