

Datasheet for ABIN927771  
**anti-JMJD6 antibody (N-Term)**



[Go to Product page](#)

1 Image

## Overview

Quantity:	100 µL
Target:	JMJD6
Binding Specificity:	N-Term
Reactivity:	Human, Mouse, Rat, Dog, Cow, Zebrafish (Danio rerio), Chicken, Xenopus laevis
Host:	Rabbit
Clonality:	Polyclonal
Conjugate:	This JMJD6 antibody is un-conjugated
Application:	Western Blotting (WB)

## Product Details

Immunogen:	JMJD6 antibody was raised in rabbit using the N terminal of JMJD6 as the immunogen
Cross-Reactivity:	Mouse (Murine), Rat (Rattus), Chicken, Cow (Bovine), Dog (Canine), Frog, Zebrafish (Brachydanio rerio)
Purification:	Purified

## Target Details

Target:	JMJD6
Alternative Name:	JMJD6 ( <a href="#">JMJD6 Products</a> )
Background:	JMJD6 is a nuclear protein with a JmjC domain. JmjC domain-containing proteins are predicted to function as protein hydroxylases or histone demethylases. This protein was first identified as a putative phosphatidylserine receptor involved in phagocytosis of apoptotic cells,

## Target Details

---

however, subsequent studies have indicated that it does not directly function in the clearance of apoptotic cells, and questioned whether it is a true phosphatidylserine receptor. Synonyms: Polyclonal JMJD6 antibody, Anti-JMJD6 antibody, jumonji domain containing 6 antibody, KIAA0585 antibody, PSR antibody, PTDSR antibody, PTDSR1 antibody.

## Application Details

---

Application Notes:	WB: 0.2-1 µg/mL Optimal conditions should be determined by the investigator.
Comment:	JMJD6 Blocking Peptide, catalog no. 33R-6716, is also available for use as a blocking control in assays to test for specificity of this JMJD6 antibody
Restrictions:	For Research Use only

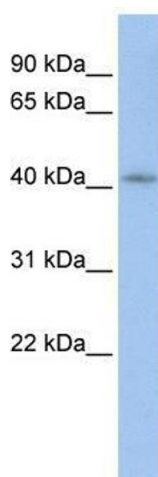
## Handling

---

Format:	Lyophilized
Concentration:	Lot specific
Buffer:	Lyophilized powder. Add 50 µL of distilled water. Final antibody concentration is 1 mg/mL in PBS buffer.
Handling Advice:	Avoid repeated freeze/thaw cycles.
Storage:	4 °C/-20 °C
Storage Comment:	Store at 4 °C, following reconstitution, aliquot and store at -20 °C.

## Images

---



### Western Blotting

**Image 1.** JMJD6 antibody used at 0.2-1 ug/ml to detect target protein.