

Datasheet for ABIN927773 **anti-SUZ12 antibody (C-Term)**



[Go to Product page](#)

1 Image

Overview

Quantity:	100 µL
Target:	SUZ12
Binding Specificity:	C-Term
Reactivity:	Human, Mouse, Cow
Host:	Rabbit
Clonality:	Polyclonal
Conjugate:	This SUZ12 antibody is un-conjugated
Application:	Western Blotting (WB)

Product Details

Immunogen:	SUZ12 antibody was raised in rabbit using the C terminal of SUZ12 as the immunogen
Cross-Reactivity:	Mouse (Murine), Cow (Bovine)
Purification:	Purified

Target Details

Target:	SUZ12
Alternative Name:	SUZ12 (SUZ12 Products)
Background:	A chromosomal aberration involving SUZ12 may be a cause of endometrial stromal tumors. Translocation t (7,17)(p15,q21) with JAZF1 generates the JAZF1-SUZ12 oncogene consisting of the N-terminus part of JAZF1 and the C-terminus part of SUZ12. It is frequently found in all cases of endometrial stromal tumors, except in endometrial stromal sarcomas, where it is

Target Details

rarer. Synonyms: Polyclonal SUZ12 antibody, Anti-SUZ12 antibody, suppressor of zeste 12 homolog, Drosophila antibody, CHET9 antibody, JJAZ1 antibody, KIAA0160 antibody.

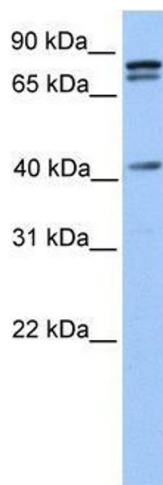
Application Details

Application Notes:	WB: 0.2-1 µg/mL Optimal conditions should be determined by the investigator.
Comment:	SUZ12 Blocking Peptide, catalog no. 33R-2719, is also available for use as a blocking control in assays to test for specificity of this SUZ12 antibody
Restrictions:	For Research Use only

Handling

Format:	Lyophilized
Concentration:	Lot specific
Buffer:	Lyophilized powder. Add 50 µL of distilled water. Final antibody concentration is 1 mg/mL in PBS buffer.
Handling Advice:	Avoid repeated freeze/thaw cycles.
Storage:	4 °C/-20 °C
Storage Comment:	Store at 4 °C, following reconstitution, aliquot and store at -20 °C.

Images



Western Blotting

Image 1. SUZ12 antibody used at 0.2-1 ug/ml to detect target protein.