

Datasheet for ABIN927777

## anti-KLHL5 antibody (Middle Region)



[Go to Product page](#)

### 1 Image

#### Overview

Quantity:	100 µL
Target:	KLHL5
Binding Specificity:	Middle Region
Reactivity:	Human, Rat, Mouse, Cow, Zebrafish (Danio rerio), Xenopus laevis, Chicken
Host:	Rabbit
Clonality:	Polyclonal
Conjugate:	This KLHL5 antibody is un-conjugated
Application:	Western Blotting (WB)

#### Product Details

Immunogen:	KLHL5 antibody was raised in rabbit using the middle region of KLHL5 as the immunogen
Cross-Reactivity:	Mouse (Murine), Rat (Rattus), Zebrafish (Brachydanio rerio), Chicken, Frog, Cow (Bovine)
Purification:	Purified

#### Target Details

Target:	KLHL5
Alternative Name:	KLHL5 ( <a href="#">KLHL5 Products</a> )
Background:	The kelch-repeat protein family is a recently found new kind of actin-binding protein. It is characterized by tandemly arranged motifs of about 50 amino acids. Most members of the kelch-repeat family were cytoskeletal proteins implicated in various cellular processes, such as actin cytoskeleton interaction, cytoplasmic sequestration of transcription factors and cell

## Target Details

morphology. Synonyms: Polyclonal KLHL5 antibody, Anti-KLHL5 antibody, kelch-like 5, Drosophila antibody.

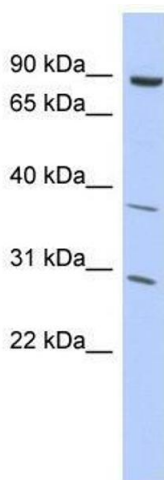
## Application Details

Application Notes:	WB: 0.2-1 µg/mL Optimal conditions should be determined by the investigator.
Comment:	KLHL5 Blocking Peptide, catalog no. 33R-5139, is also available for use as a blocking control in assays to test for specificity of this KLHL5 antibody
Restrictions:	For Research Use only

## Handling

Format:	Lyophilized
Concentration:	Lot specific
Buffer:	Lyophilized powder. Add 50 µL of distilled water. Final antibody concentration is 1 mg/mL in PBS buffer.
Handling Advice:	Avoid repeated freeze/thaw cycles.
Storage:	4 °C/-20 °C
Storage Comment:	Store at 4 °C, following reconstitution, aliquot and store at -20 °C.

## Images



### Western Blotting

**Image 1.** KLHL5 antibody used at 2.5 ug/ml to detect target protein.