

Datasheet for ABIN927782
anti-KLF3 antibody (C-Term)



[Go to Product page](#)

1 Image

Overview

Quantity:	100 µL
Target:	KLF3
Binding Specificity:	C-Term
Reactivity:	Human, Rat
Host:	Rabbit
Clonality:	Polyclonal
Conjugate:	This KLF3 antibody is un-conjugated
Application:	Western Blotting (WB)

Product Details

Immunogen:	Klf3 antibody was raised in rabbit using the C terminal of Klf3 as the immunogen
Cross-Reactivity:	Rat (Rattus)
Purification:	Purified

Target Details

Target:	KLF3
Alternative Name:	Klf3 (KLF3 Products)
Background:	Human homolog is a transcription factor, involved in haematopoietic differentiation. Synonyms: Polyclonal Klf3 antibody, Anti-Klf3 antibody, Kruppel-like factor 3, basic antibody, Bklf antibody, Tef-2 antibody.

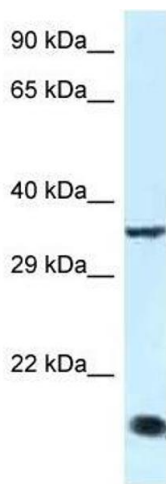
Application Details

Application Notes:	Optimal conditions should be determined by the investigator.
Comment:	Klf3 Blocking Peptide, catalog no. 33R-9940, is also available for use as a blocking control in assays to test for specificity of this Klf3 antibody
Restrictions:	For Research Use only

Handling

Format:	Lyophilized
Concentration:	Lot specific
Buffer:	Lyophilized powder. Add 50 μ L of distilled water. Final antibody concentration is 1 mg/mL in PBS buffer.
Handling Advice:	Avoid repeated freeze/thaw cycles.
Storage:	4 °C/-20 °C
Storage Comment:	Store at 4 °C, following reconstitution, aliquot and store at -20 °C.

Images



Western Blotting

Image 1. Western Blot showing Klf3 antibody used at a concentration of 1.0 ug/ml against Rat Muscle Lysate