

Datasheet for ABIN927783  
**anti-CHRAC1 antibody (Middle Region)**



[Go to Product page](#)

1 Image

## Overview

Quantity:	100 µL
Target:	CHRAC1
Binding Specificity:	Middle Region
Reactivity:	Human, Mouse, Rat, Cow, Dog, Drosophila melanogaster
Host:	Rabbit
Clonality:	Polyclonal
Conjugate:	This CHRAC1 antibody is un-conjugated
Application:	Western Blotting (WB)

## Product Details

Immunogen:	CHRAC1 antibody was raised in rabbit using the middle region of CHRAC1 as the immunogen
Cross-Reactivity:	Mouse (Murine), Rat (Rattus), Fruit Fly (Drosophila melanogaster), Cow (Bovine), Dog (Canine)
Purification:	Purified

## Target Details

Target:	CHRAC1
Alternative Name:	CHRAC1 ( <a href="#">CHRAC1 Products</a> )
Background:	CHRAC1 is a histone-fold protein that interacts with other histone-fold proteins to bind DNA in a sequence-independent manner. These histone-fold protein dimers combine within larger enzymatic complexes for DNA transcription, replication, and packaging. CHRAC1 is a histone-fold protein that interacts with other histone-fold proteins to bind DNA in a sequence-

## Target Details

independent manner. These histone-fold protein dimers combine within larger enzymatic complexes for DNA transcription, replication, and packaging. Synonyms: Polyclonal CHRAC1 antibody, Anti-CHRAC1 antibody, chromatin accessibility complex 1 antibody, CHARC1 antibody, CHARC15 antibody, CHRAC15 antibody, YCL1 antibody.

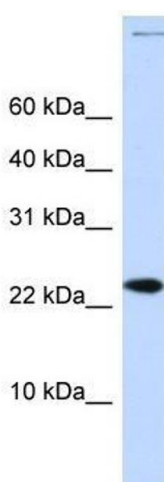
## Application Details

Application Notes:	WB: 0.2-1 µg/mL Optimal conditions should be determined by the investigator.
Comment:	CHRAC1 Blocking Peptide, catalog no. 33R-8407, is also available for use as a blocking control in assays to test for specificity of this CHRAC1 antibody
Restrictions:	For Research Use only

## Handling

Format:	Lyophilized
Concentration:	Lot specific
Buffer:	Lyophilized powder. Add 50 µL of distilled water. Final antibody concentration is 1 mg/mL in PBS buffer.
Handling Advice:	Avoid repeated freeze/thaw cycles.
Storage:	4 °C/-20 °C
Storage Comment:	Store at 4 °C, following reconstitution, aliquot and store at -20 °C.

## Images



### Western Blotting

**Image 1.** CHRAC1 antibody used at 0.2-1 µg/ml to detect target protein.