

Datasheet for ABIN927799  
**anti-Kelch-Like 4 antibody (N-Term)**



[Go to Product page](#)

1 Image

## Overview

Quantity:	100 µL
Target:	Kelch-Like 4 (KLHL4)
Binding Specificity:	N-Term
Reactivity:	Human, Mouse, Rat, Zebrafish (Danio rerio)
Host:	Rabbit
Clonality:	Polyclonal
Conjugate:	This Kelch-Like 4 antibody is un-conjugated
Application:	Western Blotting (WB)

## Product Details

Immunogen:	KLHL4 antibody was raised in rabbit using the N terminal of KLHL4 as the immunogen
Cross-Reactivity:	Mouse (Murine), Rat (Rattus), Zebrafish (Brachydanio rerio)
Purification:	Purified

## Target Details

Target:	Kelch-Like 4 (KLHL4)
Alternative Name:	KLHL4 ( <a href="#">KLHL4 Products</a> )
Background:	KLHL4 is a member of the kelch family of proteins, which are characterized by kelch repeat motifs and a POZ/BTB protein-binding domain. It is thought that kelch repeats are actin binding domains. However, the specific function of this protein has not been determined. Synonyms: Polyclonal KLHL4 antibody, Anti-KLHL4 antibody, kelch-like 4, Drosophila antibody, DKELCHL

## Target Details

---

antibody, KHL4 antibody, KIAA1687 antibody.

## Application Details

---

Application Notes:	WB: 0.2-1 µg/mL Optimal conditions should be determined by the investigator.
Comment:	KLHL4 Blocking Peptide, catalog no. 33R-1743, is also available for use as a blocking control in assays to test for specificity of this KLHL4 antibody
Restrictions:	For Research Use only

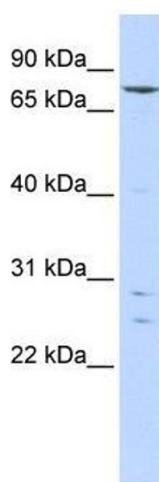
## Handling

---

Format:	Lyophilized
Concentration:	Lot specific
Buffer:	Lyophilized powder. Add 50 µL of distilled water. Final antibody concentration is 1 mg/mL in PBS buffer.
Handling Advice:	Avoid repeated freeze/thaw cycles.
Storage:	4 °C/-20 °C
Storage Comment:	Store at 4 °C, following reconstitution, aliquot and store at -20 °C.

## Images

---



### Western Blotting

**Image 1.** KLHL4 antibody used at 0.2-1 ug/ml to detect target protein.