

Datasheet for ABIN927802  
**anti-BBX antibody (Middle Region)**



[Go to Product page](#)

1 Image

## Overview

Quantity:	100 µL
Target:	BBX
Binding Specificity:	Middle Region
Reactivity:	Human, Mouse, Rat, Dog, Chicken
Host:	Rabbit
Clonality:	Polyclonal
Conjugate:	This BBX antibody is un-conjugated
Application:	Western Blotting (WB)

## Product Details

Immunogen:	BBX antibody was raised in rabbit using the middle region of BBX as the immunogen
Cross-Reactivity:	Mouse (Murine), Rat (Rattus), Dog (Canine), Chicken
Purification:	Purified

## Target Details

Target:	BBX
Alternative Name:	BBX ( <a href="#">BBX Products</a> )
Background:	BBX is a transcription factor that is necessary for cell cycle progression from G1 to S phase. Synonyms: Polyclonal BBX antibody, Anti-BBX antibody, bobby sox homolog, Drosophila antibody, HSPC339 antibody, MDS001 antibody.

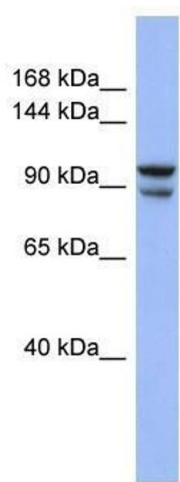
## Application Details

Application Notes:	WB: 0.2-1 µg/mL Optimal conditions should be determined by the investigator.
Comment:	BBX Blocking Peptide, catalog no. 33R-9796, is also available for use as a blocking control in assays to test for specificity of this BBX antibody
Restrictions:	For Research Use only

## Handling

Format:	Lyophilized
Concentration:	Lot specific
Buffer:	Lyophilized powder. Add 50 µL of distilled water. Final antibody concentration is 1 mg/mL in PBS buffer.
Handling Advice:	Avoid repeated freeze/thaw cycles.
Storage:	4 °C/-20 °C
Storage Comment:	Store at 4 °C, following reconstitution, aliquot and store at -20 °C.

## Images



### Western Blotting

**Image 1.** BBX antibody used at 0.2-1 ug/ml to detect target protein.