

Datasheet for ABIN927806
anti-ZFP28 antibody (Middle Region)



[Go to Product page](#)

1 Image

Overview

Quantity:	100 µL
Target:	ZFP28
Binding Specificity:	Middle Region
Reactivity:	Human, Mouse, Rat, Cow, Dog, Chicken, Pig
Host:	Rabbit
Clonality:	Polyclonal
Conjugate:	This ZFP28 antibody is un-conjugated
Application:	Western Blotting (WB)

Product Details

Immunogen:	ZFP28 antibody was raised in rabbit using the middle region of ZFP28 as the immunogen
Cross-Reactivity:	Mouse (Murine), Rat (Rattus), Cow (Bovine), Dog (Canine), Chicken, Pig (Porcine)
Purification:	Purified

Target Details

Target:	ZFP28
Alternative Name:	ZFP28 (ZFP28 Products)
Background:	ZFP28 may be involved in transcriptional regulation. ZFP28 may also have a role in embryonic development. Synonyms: Polyclonal ZFP28 antibody, Anti-ZFP28 antibody, zinc finger protein 28 homolog, mouse antibody, DKFZp686K03205 antibody, KIAA1431 antibody, MGC104540 antibody.

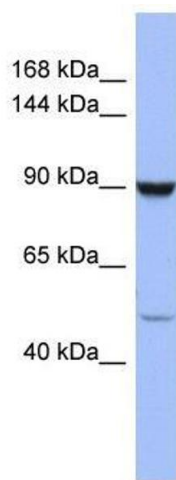
Application Details

Application Notes:	WB: 0.2-1 µg/mL Optimal conditions should be determined by the investigator.
Comment:	ZFP28 Blocking Peptide, catalog no. 33R-8011, is also available for use as a blocking control in assays to test for specificity of this ZFP28 antibody
Restrictions:	For Research Use only

Handling

Format:	Lyophilized
Concentration:	Lot specific
Buffer:	Lyophilized powder. Add 50 µL of distilled water. Final antibody concentration is 1 mg/mL in PBS buffer.
Handling Advice:	Avoid repeated freeze/thaw cycles.
Storage:	4 °C/-20 °C
Storage Comment:	Store at 4 °C, following reconstitution, aliquot and store at -20 °C.

Images



Western Blotting

Image 1. ZFP28 antibody used at 0.2-1 ug/ml to detect target protein.