

Datasheet for ABIN927821
anti-KLHL12 antibody (N-Term)



[Go to Product page](#)

1 Image

Overview

Quantity:	100 µL
Target:	KLHL12
Binding Specificity:	N-Term
Reactivity:	Human, Rat
Host:	Rabbit
Clonality:	Polyclonal
Conjugate:	This KLHL12 antibody is un-conjugated
Application:	Western Blotting (WB)

Product Details

Immunogen:	Klhl12 antibody was raised in rabbit using the N terminal of Klhl12 as the immunogen
Cross-Reactivity:	Rat (Rattus)
Purification:	Purified

Target Details

Target:	KLHL12
Alternative Name:	Klhl12 (KLHL12 Products)
Background:	Klhl12 serves as a substrate-specific adapter for the CUL3-based ubiquitin-protein E3 ligase complex. It negatively regulates the Wnt signaling pathway via the targeted ubiquitination and subsequent proteolysis of DVL3. Synonyms: Polyclonal Klhl12 antibody, Anti-Klhl12 antibody, kelch-like 12, Drosophila antibody, C3ip1 antibody, MGC93127 antibody.

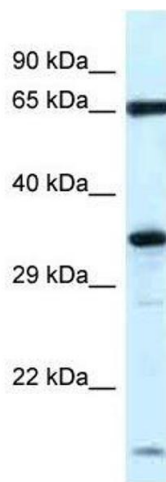
Application Details

Application Notes:	Optimal conditions should be determined by the investigator.
Comment:	Klhl12 Blocking Peptide, catalog no. 33R-2002, is also available for use as a blocking control in assays to test for specificity of this Klhl12 antibody
Restrictions:	For Research Use only

Handling

Format:	Lyophilized
Concentration:	Lot specific
Buffer:	Lyophilized powder. Add 50 μ L of distilled water. Final antibody concentration is 1 mg/mL in PBS buffer.
Handling Advice:	Avoid repeated freeze/thaw cycles.
Storage:	4 °C/-20 °C
Storage Comment:	Store at 4 °C, following reconstitution, aliquot and store at -20 °C.

Images



Western Blotting

Image 1. Western Blot showing Klhl12 antibody used at a concentration of 1.0 μ g/ml against Rat Brain Lysate