

Datasheet for ABIN927831
anti-HSPBAP1 antibody (C-Term)



[Go to Product page](#)

2 Images

Overview

Quantity:	100 µL
Target:	HSPBAP1
Binding Specificity:	C-Term
Reactivity:	Human
Host:	Rabbit
Clonality:	Polyclonal
Conjugate:	This HSPBAP1 antibody is un-conjugated
Application:	Western Blotting (WB), Immunohistochemistry (IHC)

Product Details

Immunogen:	HSPBAP1 antibody was raised in rabbit using the C terminal of HSPBAP1 as the immunogen
Purification:	Purified

Target Details

Target:	HSPBAP1
Alternative Name:	HSPBAP1 (HSPBAP1 Products)
Background:	HSPBAP1 may play a role in cellular stress response. Synonyms: Polyclonal HSPBAP1 antibody, Anti-HSPBAP1 antibody, HSPB, heat shock 27kDa associated protein 1 antibody, FLJ22623 antibody, FLJ39386 antibody, PASS1 antibody.

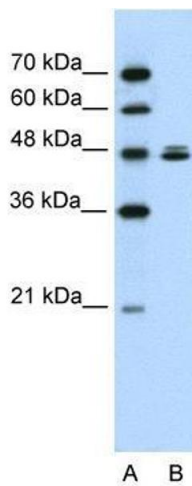
Application Details

Application Notes:	WB: 0.2-1 µg/mL Optimal conditions should be determined by the investigator.
Comment:	HSPBAP1 Blocking Peptide, catalog no. 33R-8354, is also available for use as a blocking control in assays to test for specificity of this HSPBAP1 antibody
Restrictions:	For Research Use only

Handling

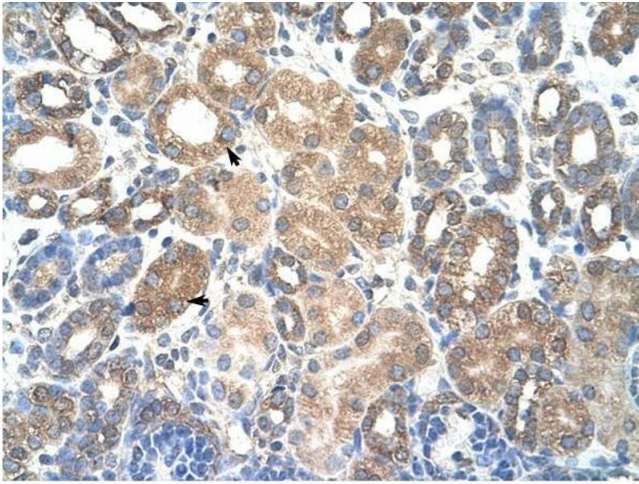
Format:	Lyophilized
Concentration:	Lot specific
Buffer:	Lyophilized powder. Add 50 µL of distilled water. Final antibody concentration is 1 mg/mL in PBS buffer.
Handling Advice:	Avoid repeated freeze/thaw cycles.
Storage:	4 °C/-20 °C
Storage Comment:	Store at 4 °C, following reconstitution, aliquot and store at -20 °C.

Images



Western Blotting

Image 1. Western Blot showing HSPBAP1 antibody used at a concentration of 1-2 µg/ml to detect its target protein.



Immunohistochemistry

Image 2. HSPBAP1 antibody was used for immunohistochemistry at a concentration of 4-8 ug/ml to stain Epithelial cells of renal tubule (arrows) in Human Kidney. Magnification is at 400X