

Datasheet for ABIN927836  
**anti-GRHL2 antibody (Middle Region)**



[Go to Product page](#)

2 Images

## Overview

Quantity:	100 µL
Target:	GRHL2
Binding Specificity:	Middle Region
Reactivity:	Human, Mouse, Rat, Cow, Dog, Zebrafish (Danio rerio), Chicken, Xenopus laevis
Host:	Rabbit
Clonality:	Polyclonal
Conjugate:	This GRHL2 antibody is un-conjugated
Application:	Western Blotting (WB)

## Product Details

Immunogen:	GRHL2 antibody was raised in rabbit using the middle region of GRHL2 as the immunogen
Cross-Reactivity:	Mouse (Murine), Rat (Rattus), Zebrafish (Brachydanio rerio), Frog, Cow (Bovine), Dog (Canine), Chicken
Purification:	Purified

## Target Details

Target:	GRHL2
Alternative Name:	GRHL2 ( <a href="#">GRHL2 Products</a> )
Background:	GRHL2 is a transcription factor that can act as a homodimer or as a heterodimer with either GRHL1 or GRHL3. Defects in this gene are a cause of non-syndromic sensorineural deafness autosomal dominant type 28. TFCP2L3 is a member of a family of transcription factor genes

## Target Details

whose archetype is TFCP2, a mammalian ortholog of the Drosophila gene 'grainyhead' (grh).  
Synonyms: Polyclonal GRHL2 antibody, Anti-GRHL2 antibody, grainyhead-like 2, Drosophila antibody, BOM antibody, DFNA28 antibody, FLJ11172 antibody, FLJ13782 antibody, MGC149294 antibody, MGC149295 antibody, TFCP2L3 antibody.

Pathways: [Tube Formation](#)

## Application Details

Application Notes: Optimal conditions should be determined by the investigator.

Comment: GRHL2 Blocking Peptide, catalog no. 33R-9498, is also available for use as a blocking control in assays to test for specificity of this GRHL2 antibody

Restrictions: For Research Use only

## Handling

Format: Lyophilized

Concentration: Lot specific

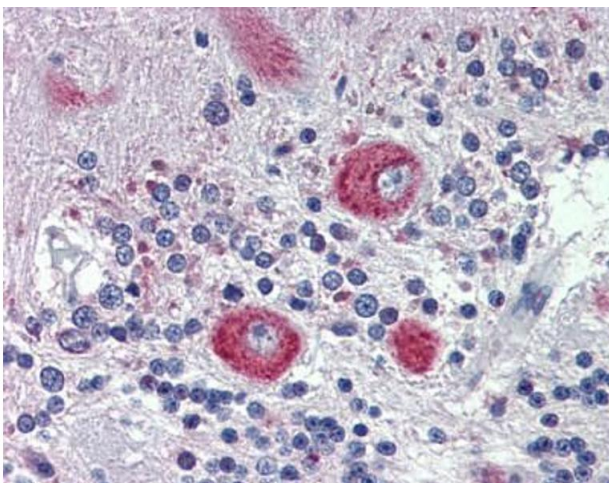
Buffer: Lyophilized powder. Add 50  $\mu$ L of distilled water. Final antibody concentration is 1 mg/mL in PBS buffer.

Handling Advice: Avoid repeated freeze/thaw cycles.

Storage: 4  $^{\circ}$ C/-20  $^{\circ}$ C

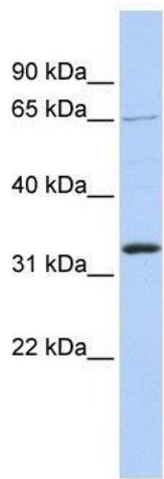
Storage Comment: Store at 4  $^{\circ}$ C, following reconstitution, aliquot and store at -20  $^{\circ}$ C.

## Images



### Immunohistochemistry

**Image 1.** GRHL2 antibody was used for immunohistochemistry at a concentration of 4-8  $\mu$ g/ml. Magnification is at 400X



### Western Blotting

**Image 2.** Western Blot showing GRHL2 antibody used at a concentration of 1.0 ug/ml against 721\_B Cell Lysate