

Datasheet for ABIN927839
anti-TRMT1L antibody (Middle Region)



[Go to Product page](#)

1 Image

Overview

Quantity:	100 µL
Target:	TRMT1L
Binding Specificity:	Middle Region
Reactivity:	Human, Cow, Dog
Host:	Rabbit
Clonality:	Polyclonal
Conjugate:	This TRMT1L antibody is un-conjugated
Application:	Western Blotting (WB)

Product Details

Immunogen:	C1 orf25 antibody was raised in rabbit using the middle region of C1 RF25 as the immunogen
Cross-Reactivity:	Dog (Canine), Cow (Bovine)
Purification:	Purified

Target Details

Target:	TRMT1L
Alternative Name:	C1orf25 (TRMT1L Products)
Background:	Although C1orf25 is similar to N2,N2-dimethylguanosine tRNA methyltransferase from other organisms, the true function of C1orf25 protein is not known. Synonyms: Polyclonal C1orf25 antibody, Anti-C1orf25 antibodyMGC25112 antibody, MGC57134 antibody, MST070 antibody, MSTP070 antibody, TRM1L antibody, bG120K12.3 antibody.

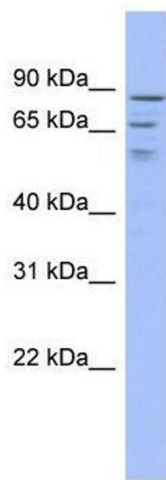
Application Details

Application Notes:	WB: 0.2-1 µg/mL Optimal conditions should be determined by the investigator.
Comment:	C1orf25 Blocking Peptide, catalog no. 33R-7545, is also available for use as a blocking control in assays to test for specificity of this C1orf25 antibody
Restrictions:	For Research Use only

Handling

Format:	Lyophilized
Concentration:	Lot specific
Buffer:	Lyophilized powder. Add 50 µL of distilled water. Final antibody concentration is 1 mg/mL in PBS buffer.
Handling Advice:	Avoid repeated freeze/thaw cycles.
Storage:	4 °C/-20 °C
Storage Comment:	Store at 4 °C, following reconstitution, aliquot and store at -20 °C.

Images



Western Blotting

Image 1. C1orf25 antibody used at 0.2-1 ug/ml to detect target protein.