

Datasheet for ABIN927864
anti-SLC26A10 antibody (N-Term)



[Go to Product page](#)

1 Image

Overview

Quantity:	100 µL
Target:	SLC26A10
Binding Specificity:	N-Term
Reactivity:	Human
Host:	Rabbit
Clonality:	Polyclonal
Conjugate:	This SLC26A10 antibody is un-conjugated
Application:	Western Blotting (WB)

Product Details

Immunogen:	SLC26 A10 antibody was raised in rabbit using the N terminal of SLC26 10 as the immunogen
Purification:	Purified

Target Details

Target:	SLC26A10
Alternative Name:	SLC26A10 (SLC26A10 Products)
Background:	SLC26A10 is a chloride/bicarbonate exchanger. Synonyms: Polyclonal SLC26A10 antibody, Anti-SLC26A10 antibody, solute carrier family 26, member 10 antibody.

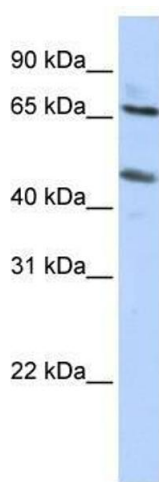
Application Details

Application Notes:	WB: 0.2-1 µg/mL Optimal conditions should be determined by the investigator.
Comment:	SLC26A10 Blocking Peptide, catalog no. 33R-6367, is also available for use as a blocking control in assays to test for specificity of this SLC26A10 antibody
Restrictions:	For Research Use only

Handling

Format:	Lyophilized
Concentration:	Lot specific
Buffer:	Lyophilized powder. Add 50 µL of distilled water. Final antibody concentration is 1 mg/mL in PBS buffer.
Handling Advice:	Avoid repeated freeze/thaw cycles.
Storage:	4 °C/-20 °C
Storage Comment:	Store at 4 °C, following reconstitution, aliquot and store at -20 °C.

Images



Western Blotting

Image 1. SLC26A10 antibody used at 0.2-1 ug/ml to detect target protein.