

Datasheet for ABIN927886

anti-NK6 Homeobox 3 antibody (Middle Region)[Go to Product page](#)**1** Image

Overview

Quantity:	100 µL
Target:	NK6 Homeobox 3 (NKX6-3)
Binding Specificity:	Middle Region
Reactivity:	Human, Mouse, Rat, Cow, Dog, Zebrafish (Danio rerio), Chicken, Xenopus laevis
Host:	Rabbit
Clonality:	Polyclonal
Conjugate:	This NK6 Homeobox 3 antibody is un-conjugated
Application:	Western Blotting (WB)

Product Details

Immunogen:	NKX6-3 antibody was raised in rabbit using the middle region of NKX6-3 as the immunogen
Cross-Reactivity:	Mouse (Murine), Rat (Rattus), Dog (Canine), Chicken, Cow (Bovine), Zebrafish (Brachydanio rerio), Frog
Purification:	Purified

Target Details

Target:	NK6 Homeobox 3 (NKX6-3)
Alternative Name:	NKX6-3 (NKX6-3 Products)
Background:	Nkx6.3 is a new member of the Nkx6 subfamily of homeodomain proteins. Members of the Nkx family of homeodomain proteins are involved in a variety of developmental processes such as cell fate determination in the CNS and in the pancreas. Nkx6.3 is expressed in the developing

Target Details

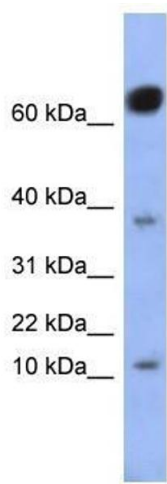
CNS and gastro-intestinal tract. Nkx6.3 shows a remarkably selective expression in a subpopulation of differentiating V2 neurons at caudal hindbrain levels. In the gut, Nkx6.3 is expressed in duodenal and glandular stomach endoderm and at the end of gestation Nkx6.3 became restricted to the base of the gastric units in the glandular stomach. Synonyms: Polyclonal NKX6-3 antibody, Anti-NKX6-3 antibody, NK6 homeobox 3 antibody, FLJ25169 antibody, NKX6.3 antibody.

Application Details

Application Notes:	WB: 0.2-1 µg/mL Optimal conditions should be determined by the investigator.
Comment:	NKX6-3 Blocking Peptide, catalog no. 33R-2648, is also available for use as a blocking control in assays to test for specificity of this NKX6-3 antibody
Restrictions:	For Research Use only

Handling

Format:	Lyophilized
Concentration:	Lot specific
Buffer:	Lyophilized powder. Add 50 µL of distilled water. Final antibody concentration is 1 mg/mL in PBS buffer.
Handling Advice:	Avoid repeated freeze/thaw cycles.
Storage:	4 °C/-20 °C
Storage Comment:	Store at 4 °C, following reconstitution, aliquot and store at -20 °C.



Western Blotting

Image 1. NKX6-3 antibody used at 0.2-1 ug/ml to detect target protein.