

## Datasheet for ABIN927892 **anti-GLIS3 antibody (C-Term)**



[Go to Product page](#)

### 1 Image

#### Overview

Quantity:	100 µL
Target:	GLIS3
Binding Specificity:	C-Term
Reactivity:	Human, Mouse, Rat
Host:	Rabbit
Clonality:	Polyclonal
Conjugate:	This GLIS3 antibody is un-conjugated
Application:	Western Blotting (WB)

#### Product Details

Immunogen:	GLIS3 antibody was raised in rabbit using the C terminal of GLIS3 as the immunogen
Cross-Reactivity:	Mouse (Murine), Rat (Rattus)
Purification:	Purified

#### Target Details

Target:	GLIS3
Alternative Name:	GLIS3 ( <a href="#">GLIS3 Products</a> )
Background:	GLIS3 is a member of the GLI-similar zinc finger protein family and has five C2H2-type zinc finger domains. GLIS3 functions as both a repressor and activator of transcription and is specifically involved in the development of pancreatic beta cells, the thyroid, eye, liver and kidney. Mutations in this gene have been associated with neonatal diabetes and congenital

## Target Details

hypothyroidism (NDH). Synonyms: Polyclonal GLIS3 antibody, Anti-GLIS3 antibody, GLIS family zinc finger 3 antibody, FLJ38999 antibody, FLJ90578 antibody, MGC33662 antibody, ZNF515 antibody.

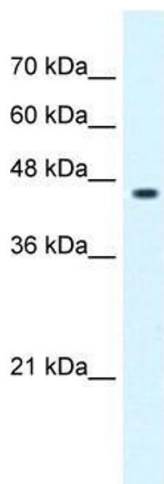
## Application Details

Application Notes:	WB: 0.2-1 µg/mL Optimal conditions should be determined by the investigator.
Comment:	GLIS3 Blocking Peptide, catalog no. 33R-7478, is also available for use as a blocking control in assays to test for specificity of this GLIS3 antibody
Restrictions:	For Research Use only

## Handling

Format:	Lyophilized
Concentration:	Lot specific
Buffer:	Lyophilized powder. Add 50 µL of distilled water. Final antibody concentration is 1 mg/mL in PBS buffer.
Handling Advice:	Avoid repeated freeze/thaw cycles.
Storage:	4 °C/-20 °C
Storage Comment:	Store at 4 °C, following reconstitution, aliquot and store at -20 °C.

## Images



### Western Blotting

**Image 1.** GLIS3 antibody used at 0.2-1 ug/ml to detect target protein.