

Datasheet for ABIN927893

anti-ZBTB9 antibody (N-Term)**2** Images[Go to Product page](#)

Overview

Quantity:	100 µL
Target:	ZBTB9
Binding Specificity:	N-Term
Reactivity:	Human, Mouse, Dog
Host:	Rabbit
Clonality:	Polyclonal
Conjugate:	This ZBTB9 antibody is un-conjugated
Application:	Western Blotting (WB), Immunohistochemistry (IHC)

Product Details

Immunogen:	ZBTB9 antibody was raised in rabbit using the N terminal of ZBTB9 as the immunogen
Cross-Reactivity:	Dog (Canine), Mouse (Murine)
Purification:	Purified

Target Details

Target:	ZBTB9
Alternative Name:	ZBTB9 (ZBTB9 Products)
Background:	ZBTB9 contains 1 BTB (POZ) domain and 2 C2H2-type zinc fingers. It may be involved in transcriptional regulation. Synonyms: Polyclonal ZBTB9 antibody, Anti-ZBTB9 antibody, zinc finger and BTB domain containing 9 antibody.

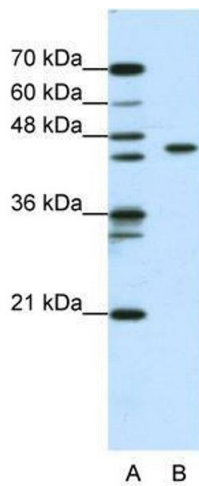
Application Details

Application Notes:	WB: 0.2-1 µg/mL Optimal conditions should be determined by the investigator.
Comment:	ZBTB9 Blocking Peptide, catalog no. 33R-5972, is also available for use as a blocking control in assays to test for specificity of this ZBTB9 antibody
Restrictions:	For Research Use only

Handling

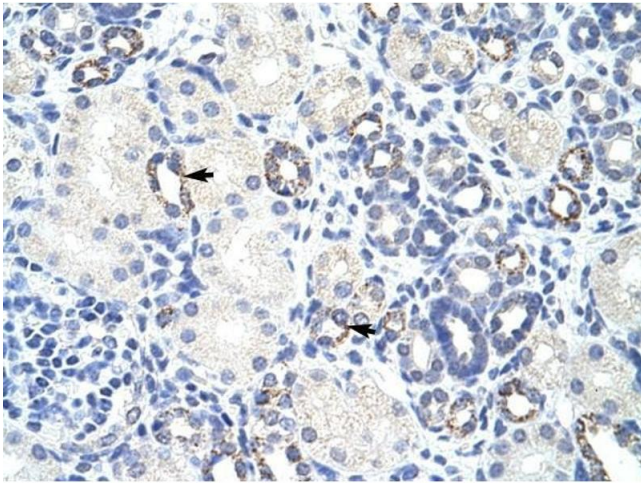
Format:	Lyophilized
Concentration:	Lot specific
Buffer:	Lyophilized powder. Add 50 µL of distilled water. Final antibody concentration is 1 mg/mL in PBS buffer.
Handling Advice:	Avoid repeated freeze/thaw cycles.
Storage:	4 °C/-20 °C
Storage Comment:	Store at 4 °C, following reconstitution, aliquot and store at -20 °C.

Images



Western Blotting

Image 1. ZBTB9 antibody used at 0.2-1 ug/ml to detect target protein.



Immunohistochemistry

Image 2. ZBTB9 antibody was used for immunohistochemistry at a concentration of 4-8 ug/ml to stain Epithelial cells of renal tubule (arrows) in Human Kidney. Magnification is at 400X