

Datasheet for ABIN927904 **anti-KLF17 antibody (N-Term)**



[Go to Product page](#)

1 Image

Overview

Quantity:	100 µL
Target:	KLF17
Binding Specificity:	N-Term
Reactivity:	Human
Host:	Rabbit
Clonality:	Polyclonal
Conjugate:	This KLF17 antibody is un-conjugated
Application:	Western Blotting (WB)

Product Details

Immunogen:	KLF17 antibody was raised in rabbit using the N terminal of KLF17 as the immunogen
Purification:	Purified

Target Details

Target:	KLF17
Alternative Name:	KLF17 (KLF17 Products)
Background:	KLF17 binds G/C-rich sites via its zinc fingers and activates transcription from CACCC-box elements. It may be a germ cell-specific transcription factor that plays important roles in spermatid differentiation and oocyte development. Synonyms: Polyclonal KLF17 antibody, Anti-KLF17 antibody, Kruppel-like factor 17 antibody, FLJ40160 antibody, ZNF393 antibody, Zfp393 antibody.

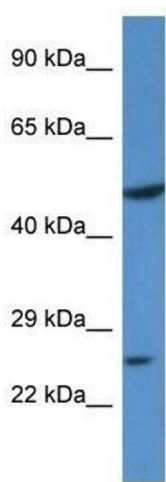
Application Details

Application Notes:	WB: 0.2-1 µg/mL Optimal conditions should be determined by the investigator.
Comment:	KLF17 Blocking Peptide, catalog no. 33R-10109, is also available for use as a blocking control in assays to test for specificity of this KLF17 antibody
Restrictions:	For Research Use only

Handling

Format:	Lyophilized
Concentration:	Lot specific
Buffer:	Lyophilized powder. Add 50 µL of distilled water. Final antibody concentration is 1 mg/mL in PBS buffer.
Handling Advice:	Avoid repeated freeze/thaw cycles.
Storage:	4 °C/-20 °C
Storage Comment:	Store at 4 °C, following reconstitution, aliquot and store at -20 °C.

Images



Western Blotting

Image 1. Western Blot showing KLF17 antibody used at a concentration of 1.0 ug/ml against 293T Cell Lysate