

Datasheet for ABIN927912
anti-RNF166 antibody (Middle Region)



[Go to Product page](#)

1 Image

Overview

Quantity:	100 µL
Target:	RNF166
Binding Specificity:	Middle Region
Reactivity:	Human, Mouse, Rat, Cow, Zebrafish (Danio rerio), Chicken, Xenopus laevis, Pig
Host:	Rabbit
Clonality:	Polyclonal
Conjugate:	This RNF166 antibody is un-conjugated
Application:	Western Blotting (WB)

Product Details

Immunogen:	RNF166 antibody was raised in rabbit using the middle region of RNF166 as the immunogen
Cross-Reactivity:	Mouse (Murine), Rat (Rattus), Chicken, Frog, Cow (Bovine), Pig (Porcine), Zebrafish (Brachydanio rerio)
Purification:	Purified

Target Details

Target:	RNF166
Alternative Name:	RNF166 (RNF166 Products)
Background:	The exact function of the protein encoded by this gene is not known. Synonyms: Polyclonal RNF166 antibody, Anti-RNF166 antibody, ring finger protein 166 antibody, MGC14381 antibody, MGC2647 antibody.

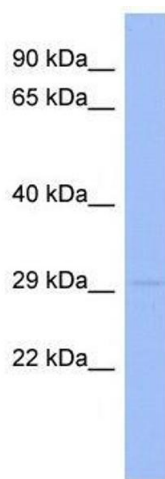
Application Details

Application Notes:	WB: 0.2-1 µg/mL Optimal conditions should be determined by the investigator.
Comment:	RNF166 Blocking Peptide, catalog no. 33R-8258, is also available for use as a blocking control in assays to test for specificity of this RNF166 antibody
Restrictions:	For Research Use only

Handling

Format:	Lyophilized
Concentration:	Lot specific
Buffer:	Lyophilized powder. Add 50 µL of distilled water. Final antibody concentration is 1 mg/mL in PBS buffer.
Handling Advice:	Avoid repeated freeze/thaw cycles.
Storage:	4 °C/-20 °C
Storage Comment:	Store at 4 °C, following reconstitution, aliquot and store at -20 °C.

Images



Western Blotting

Image 1. RNF166 antibody used at 5 ug/ml to detect target protein.