

Datasheet for ABIN927914 **anti-HKR1 antibody (C-Term)**

3 Images



[Go to Product page](#)

Overview

Quantity:	100 µL
Target:	HKR1
Binding Specificity:	C-Term
Reactivity:	Human, Mouse, Rat, Cow, Dog
Host:	Rabbit
Clonality:	Polyclonal
Conjugate:	This HKR1 antibody is un-conjugated
Application:	Western Blotting (WB), Immunohistochemistry (IHC)

Product Details

Immunogen:	HKR1 antibody was raised in rabbit using the C terminal of HKR1 as the immunogen
Cross-Reactivity:	Mouse (Murine), Rat (Rattus), Cow (Bovine), Dog (Canine)
Purification:	Purified

Target Details

Target:	HKR1
Alternative Name:	HKR1 (HKR1 Products)
Background:	HKR1 is one of the GLI-Kruppel family of human genes. Members of this family have similar H-C links, i.e., a conserved stretch of 9 amino acids connecting the C-terminal histidine of one finger to the N-terminal cysteine of the next. On the basis of amino acid sequence and intron-exon organization, the genes could be placed into one of two subgroups: the GLI subgroup

Target Details

(with the consensus finger amino acid sequence [Y/F]XCX3GCX3[F/Y]X5LX2HX3-4H[T/S]GEKP) or the Kr subgroup (with the consensus finger amino acid sequence [Y/F]XCX2CX3FX5LX2HXRHTGEKP). Synonyms: Polyclonal HKR1 antibody, Anti-HKR1 antibody, GLI-Kruppel family member HKR1 antibody.

Application Details

Application Notes:	WB: 0.125 µg/mL Optimal conditions should be determined by the investigator.
Comment:	HKR1 Blocking Peptide, catalog no. 33R-7867, is also available for use as a blocking control in assays to test for specificity of this HKR1 antibody
Restrictions:	For Research Use only

Handling

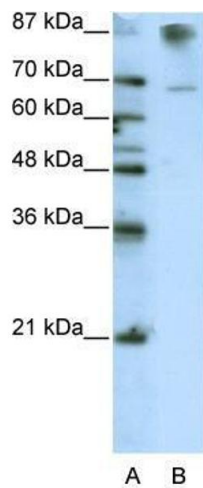
Format:	Lyophilized
Concentration:	Lot specific
Buffer:	Lyophilized powder. Add 50 µL of distilled water. Final antibody concentration is 1 mg/mL in PBS buffer.
Handling Advice:	Avoid repeated freeze/thaw cycles.
Storage:	4 °C/-20 °C
Storage Comment:	Store at 4 °C, following reconstitution, aliquot and store at -20 °C.

Images



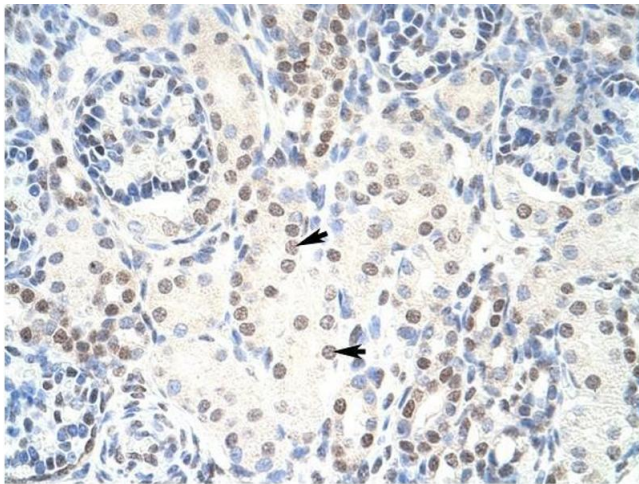
Immunohistochemistry

Image 1. HKR1 antibody was used for immunohistochemistry at a concentration of 4-8 ug/ml to stain Myocardial cells (arrows) in Human Heart. Magnification is at 400X.



Western Blotting

Image 2. Western Blot showing HKR1 antibody used at a concentration of 1-2 ug/ml to detect its target protein.



Immunohistochemistry

Image 3. HKR1 antibody was used for immunohistochemistry at a concentration of 4-8 ug/ml to stain Epithelial cells of renal tubule (arrows) in Human Kidney. Magnification is at 400X