

Datasheet for ABIN927916 **anti-BCL6B antibody (Middle Region)**



[Go to Product page](#)

1 Image

Overview

Quantity:	100 µL
Target:	BCL6B
Binding Specificity:	Middle Region
Reactivity:	Human, Mouse, Cow, Rat, Dog, Zebrafish (Danio rerio), Chicken, Xenopus laevis
Host:	Rabbit
Clonality:	Polyclonal
Conjugate:	This BCL6B antibody is un-conjugated
Application:	Western Blotting (WB)

Product Details

Immunogen:	BCL6 B antibody was raised in rabbit using the middle region of BCL6 as the immunogen
Cross-Reactivity:	Mouse (Murine), Rat (Rattus), Cow (Bovine), Dog (Canine), Chicken, Frog, Zebrafish (Brachydanio rerio)
Purification:	Purified

Target Details

Target:	BCL6B
Alternative Name:	BCL6B (BCL6B Products)
Background:	BCL6B acts as a sequence-specific transcriptional repressor in association with BCL6. BCL6B may function in a narrow stage or be related to some events in the early B-cell development. Synonyms: Polyclonal BCL6B antibody, Anti-BCL6B antibody, B-cell CLL/lymphoma 6, member

Target Details

B, zinc finger protein antibody, BAZF antibody, ZBTB28 antibody, ZNF62 antibody.

Pathways: [BCR Signaling](#)

Application Details

Application Notes: WB: 0.2-1 µg/mL
Optimal conditions should be determined by the investigator.

Comment: BCL6B Blocking Peptide, catalog no. 33R-5338, is also available for use as a blocking control in assays to test for specificity of this BCL6B antibody

Restrictions: For Research Use only

Handling

Format: Lyophilized

Concentration: Lot specific

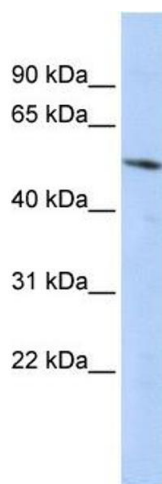
Buffer: Lyophilized powder. Add 50 µL of distilled water. Final antibody concentration is 1 mg/mL in PBS buffer.

Handling Advice: Avoid repeated freeze/thaw cycles.

Storage: 4 °C/-20 °C

Storage Comment: Store at 4 °C, following reconstitution, aliquot and store at -20 °C.

Images



Western Blotting

Image 1. Western Blot showing BCL6B antibody used at a concentration of 1-2 µg/ml to detect its target protein.