

Datasheet for ABIN927925
anti-BRF1 antibody (C-Term)



[Go to Product page](#)

1 Image

Overview

Quantity:	100 µL
Target:	BRF1
Binding Specificity:	C-Term
Reactivity:	Mouse, Rat
Host:	Rabbit
Clonality:	Polyclonal
Conjugate:	This BRF1 antibody is un-conjugated
Application:	Western Blotting (WB)

Product Details

Immunogen:	BRF1 antibody was raised in rabbit using the C terminal of BRF1 as the immunogen
Cross-Reactivity:	Rat (Rattus)
Purification:	Purified

Target Details

Target:	BRF1
Alternative Name:	BRF1 (BRF1 Products)
Background:	Brf1 is a general activator of RNA polymerase which utilizes different TFIIIB complexes at structurally distinct promoters. Synonyms: Polyclonal BRF1 antibody, Anti-BRF1 antibody.

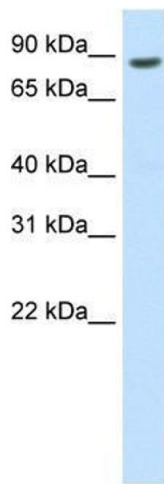
Application Details

Application Notes:	WB: 0.2-1 µg/mL Optimal conditions should be determined by the investigator.
Comment:	BRF1 Blocking Peptide, catalog no. 33R-3576, is also available for use as a blocking control in assays to test for specificity of this BRF1 antibody
Restrictions:	For Research Use only

Handling

Format:	Lyophilized
Concentration:	Lot specific
Buffer:	Lyophilized powder. Add 50 µL of distilled water. Final antibody concentration is 1 mg/mL in PBS buffer.
Handling Advice:	Avoid repeated freeze/thaw cycles.
Storage:	4 °C/-20 °C
Storage Comment:	Store at 4 °C, following reconstitution, aliquot and store at -20 °C.

Images



Western Blotting

Image 1. BRF1 antibody used at 0.2-1 ug/ml to detect target protein.