

Datasheet for ABIN927942  
**anti-RBM15B antibody (C-Term)**



[Go to Product page](#)

1 Image

## Overview

Quantity:	100 µL
Target:	RBM15B
Binding Specificity:	C-Term
Reactivity:	Human, Mouse
Host:	Rabbit
Clonality:	Polyclonal
Conjugate:	This RBM15B antibody is un-conjugated
Application:	Western Blotting (WB)

## Product Details

Immunogen:	Rbm15 b antibody was raised in rabbit using the C terminal of Rbm15 as the immunogen
Cross-Reactivity:	Mouse (Murine)
Purification:	Purified

## Target Details

Target:	RBM15B
Alternative Name:	Rbm15b ( <a href="#">RBM15B Products</a> )
Background:	Rbm15b may function in the regulation of alternative or illicit splicing. Synonyms: Polyclonal Rbm15b antibody, Anti-Rbm15b antibody, RNA binding motif protein 15B antibody, 1810017N16Rik antibody.

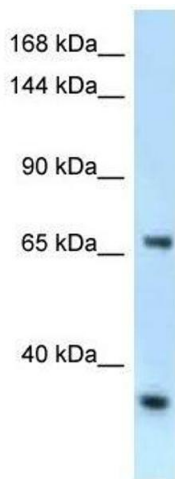
## Application Details

Application Notes:	Optimal conditions should be determined by the investigator.
Comment:	Rbm15b Blocking Peptide, catalog no. 33R-8702, is also available for use as a blocking control in assays to test for specificity of this Rbm15b antibody
Restrictions:	For Research Use only

## Handling

Format:	Lyophilized
Concentration:	Lot specific
Buffer:	Lyophilized powder. Add 50 $\mu$ L of distilled water. Final antibody concentration is 1 mg/mL in PBS buffer.
Handling Advice:	Avoid repeated freeze/thaw cycles.
Storage:	4 °C/-20 °C
Storage Comment:	Store at 4 °C, following reconstitution, aliquot and store at -20 °C.

## Images



### Western Blotting

**Image 1.** Western Blot showing Rbm15b antibody used at a concentration of 1.0  $\mu$ g/ml against Mouse Heart Lysate